

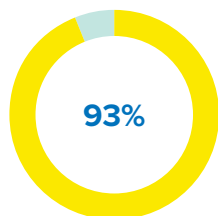
Step 1

PREVENTION

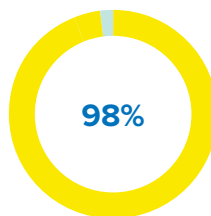
Community Engagement & Awareness-Raising

Our team works around the clock to capacitate and empower refugees in order to prevent infection and transmission within their families and the community.

Refugees Awareness



Know preventative measures to protect against COVID-19



Would call the Ministry of Public Health or approach a PHC if a family member had symptoms

**Based on the latest protection monitoring results*

Communicating with Communities

100% of refugees known to UNHCR were reached through all social media platforms with information on:

- COVID-19 symptoms and transmission
- Hygiene awareness and prevention methods
- Diagnostic and treatment procedures
- Government instructions on movements and curfew
- Self-isolation procedures



354,417 calls related to COVID-19 assistance responded to by the joint UNHCR - WFP Call Center since mid-April 2020

Awareness Sessions, Hygiene Kits Distributions and Community Engagement

Humanitarian agencies conducted hygiene promotion and awareness sessions and distributed hygiene kits in informal tented settlements, and similar sites reaching **531,928** individuals living in such overcrowded conditions. Dividing work, UNICEF focused on tented settlements and UNHCR on collective shelters.



531,928
persons



488
refugees with medical background doing community health surveillance



14,652
Covid-19 information sessions conducted (by outreach and community health volunteers)



106,385
families



650
UNHCR staff and frontline workers trained



7,433
refugees trained and mobilized



7,515
informal tented settlements



1,135
collective shelters



Rapid Response Teams established in **1,311** cadasters



More than **79,384** masks, **67,415** soap bars were produced by refugees at UNHCR supported community centres and distributed to refugee and host communities.

COVID-19 Cases Among Refugees






2,734
positive cases

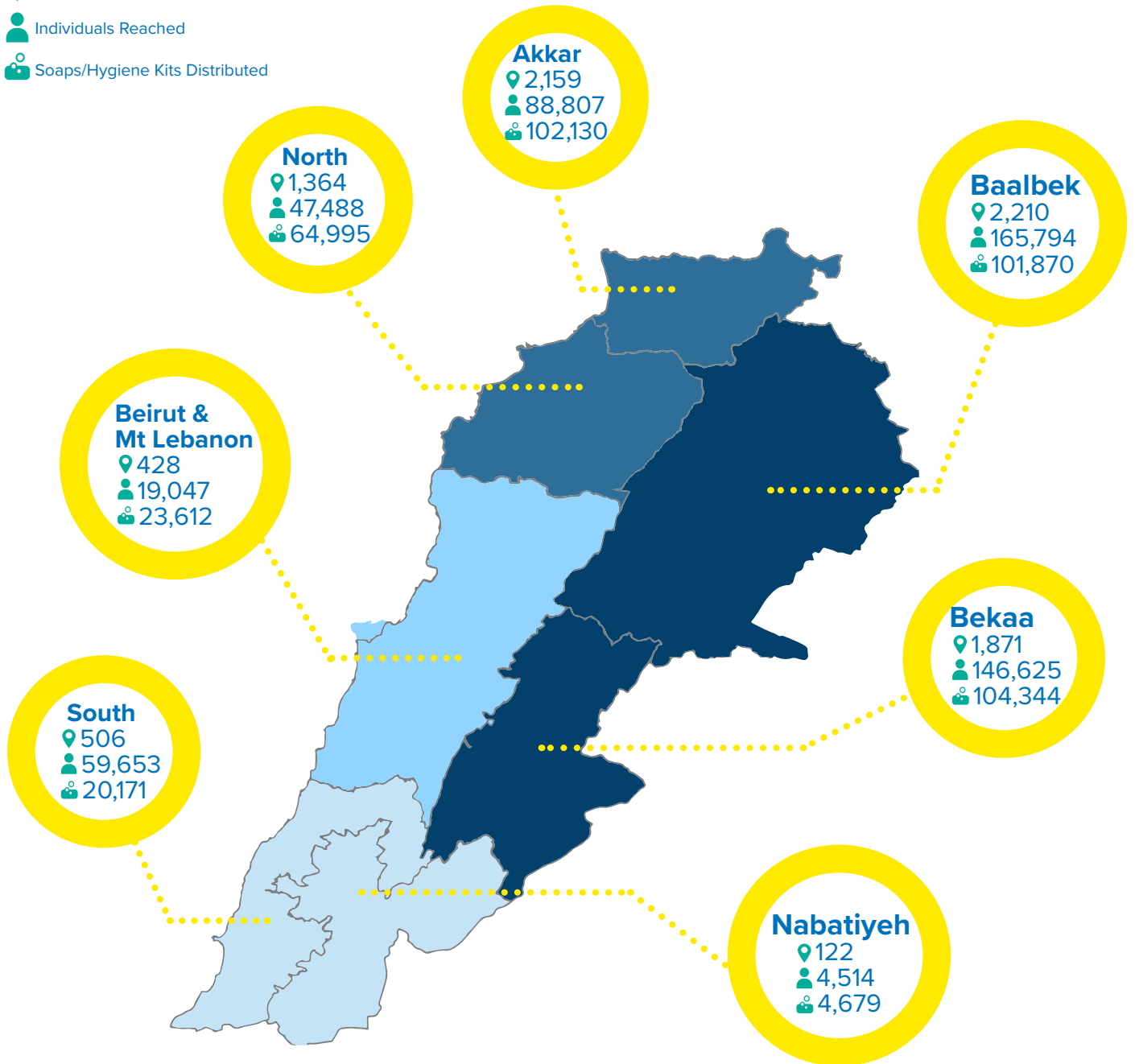
▲ 228 in informal tented settlements

♥ 2,049 recovered

● 119 deceased

DISTRIBUTION MAP

-  Sites Reached
-  Individuals Reached
-  Soaps/Hygiene Kits Distributed



Percentage of coverage per governorate



Scan the QR code to learn more about the PCR Testing Campaign



UNHCR
The UN Refugee Agency

Step 2

CONTAINING TRANSMISSION

Isolation procedures in overcrowded settings

We are setting up and supporting isolation facilities as well as providing related guidance in over-crowded settings where people might not have the possibility to isolate at home.

Guidance on Isolation


Standard Operating Procedures on isolation and quarantining of refugees confirmed or suspected of having COVID-19 were produced in compliance with national guidelines.


User Guide for refugees on the isolation and quarantining procedures shared with all refugees known to UNHCR and humanitarian partners providing support.


Terms of reference for site management produced in compliance with national guidelines and through a consultative process outlining the administrative, management and service delivery accountabilities and responsibilities for Level 3 isolation facilities.




Supporting Communities' Capacities to Isolate

 Capacity of **10,000** contingency shelter kits ready to be deployed within hours to support L1, L2 and L4 isolation situations.


 **488** refugees with medical background mobilized and trained on isolation procedures.

 **1,781** site community groups of 3 to 5 refugee volunteers established across the country to play an active role on isolation procedures.


 Rapid Response Teams of humanitarian partners established and mobilized in **1,311** out of 1,612 cadasters, ready to support on isolation procedures.

 Personal Protective Equipment (PPEs) procured for all UNHCR staff, health workers and Rapid Response Team members.

 Distribution of food/hygiene parcels with humanitarian partners, targeting **10,000** vulnerable families.

 **22,500** vulnerable refugee families (22,000 Syrian families and 500 families of refugees of other nationalities), not benefiting from any support, received temporary cash assistance as part of the COVID-19 response in 2020 to help them cope with the emergency situation. This was on top of the 57,630 families assisted with the regular monthly multi-purpose cash assistance in 2020.

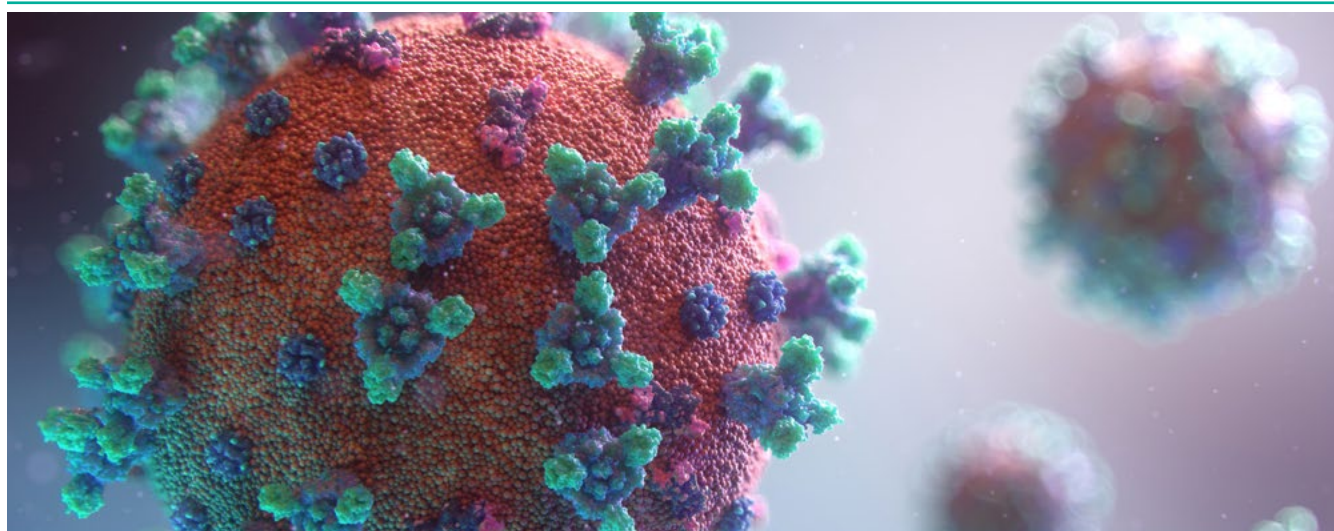
Support Sample Testing in Overcrowded Settings

 In collaboration with WHO, AMEL and IOCC, UNHCR facilitated sample COVID-19 testing for refugees living in overcrowded settings together with MoPH at a planned rate of 200 PCR tests per day and over a period of 5 weeks between May and June.

147 sites covered across the country

3,599 samples collected

3,599 results received, all negative



*Any prefabricated, rubhalls or additional structures established will be dismantled when no longer required for isolation within the national COVID-19 response.

MAP OF SUPPORT FOR ISOLATION CAPACITIES

22%

of Syrian refugees in Lebanon live in informal settlements and collective shelters

4

isolation centres being set up in refugee hosting areas

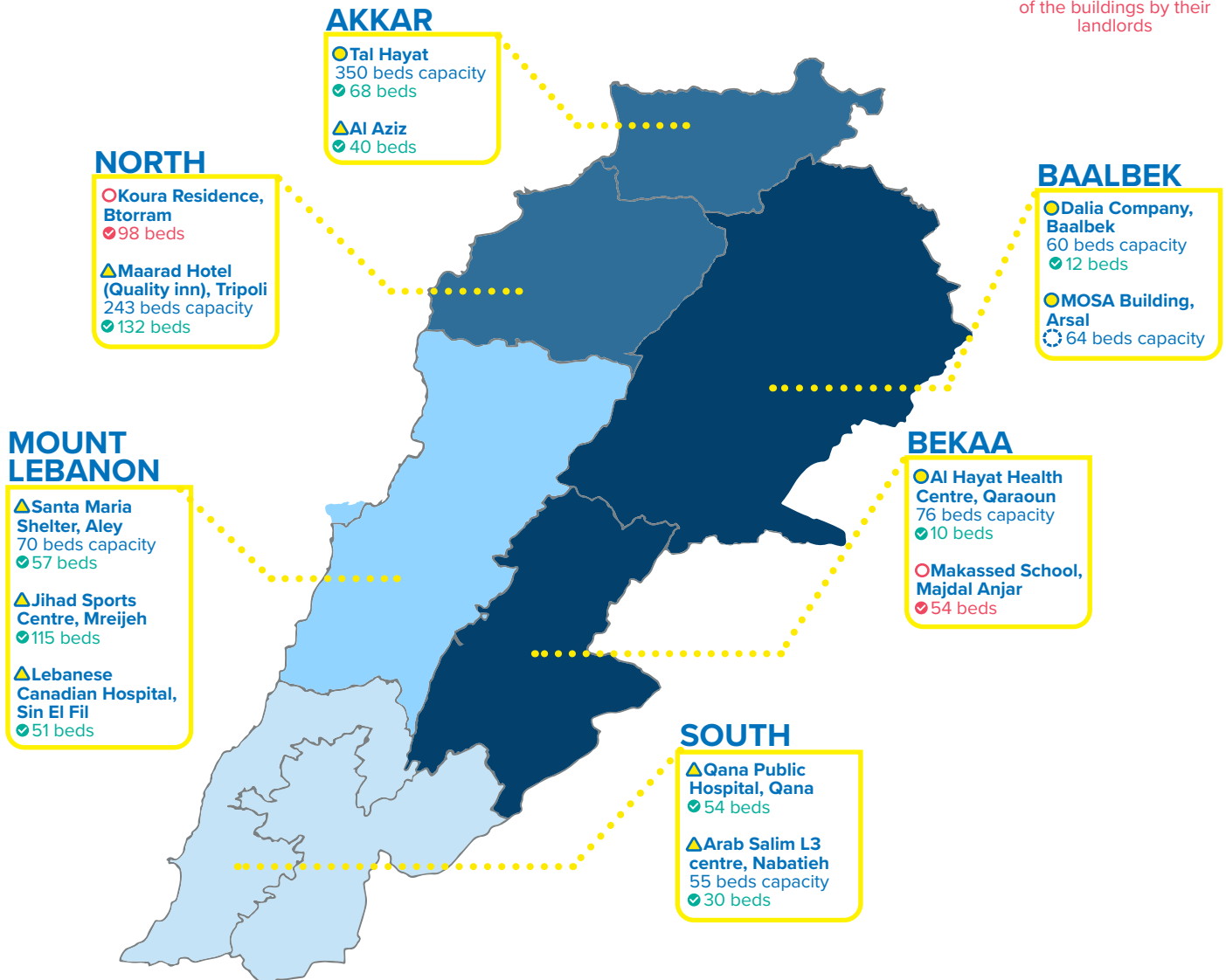
9

municipal isolation centres supported by UNHCR in North, South, Bekaa and Mount Lebanon

10

sites already in use with a capacity of **569 beds**

2 of the 6 initially completed centres have closed due to repurposing of the buildings by their landlords



The sites showed on the map are available to all persons in need regardless of nationality or status.

2,268 dedicated COVID-19 assessment conducted (L1 to L3 isolation)
577 sites suitable with L2 isolation capacity

- Isolation centre
- ▲ Municipal isolation centre
- Centre closed down
- ✓ Ready for use
- ⊞ Work in progress



Scan the QR code to watch our video on Isolation Centres in Lebanon



UNHCR
The UN Refugee Agency

Step 3

TREATMENT AND CASE MANAGEMENT

The expansion and rehabilitation seeks to capacitate selected public and private hospitals across Lebanon to receive and treat COVID-19 patients and avoid competition for care. Care should be accessible to all patients, regardless of nationality.

Projection



An overall target of **800** additional hospital beds, **100** additional ICU beds and **8** additional dialysis beds for COVID-19 patients are being distributed over 3 phases.



Priority phase 1 targeted **5** hospitals in Tripoli, Halba, Baalbek, RHUH and Saida. Phase 2 further expands the capacity in **8** hospitals across the country. UNHCR is also adding a total of **8** dialysis units for COVID-19 patients in Tripoli, RHUH, Baalbek and Saida, where an as-sessment is still ongoing.

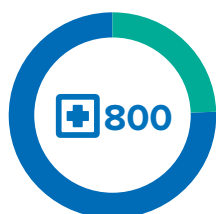


Given the fast deterioration of the COVID-19 situation since the start of 2021, UNHCR is currently moving fast to expedite the distribution of the remaining beds and equipment to those hospitals which can quickly take on additional capacity, based on the hospital's staffing and operation capacities and in coordination with other key stakeholders such as MOPH

Supplies



As part of medical supplies procured by UNHCR for the response, UNHCR has meanwhile received medicine stock for over 22,000 Covid-19 patients as well as the majority of the hospital equipment and supplies



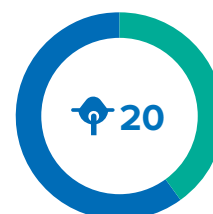
Hospital Beds
197 dispatched
603 in warehouse



ICU Beds
67 dispatched
33 in warehouse



Stationary Ventilators
67 dispatched
33 in warehouse



Portable Ventilators
8 donated to the LRC
& 1 to Halba Gov. Hospital
11 in warehouse

Support to Hospitals Network

UNHCR is expanding hospital capacity to benefit COVID-19 patients from both refugee and Lebanese communities, through:



The design, construction and equipping of temporary COVID-19 units annexed to selected hospitals, or rehabilitation of existing unused structure within hospitals to be COVID-19 units.



Personal Protection Equipment (PPEs), renewable medical supplies and medicines to enable them to manage COVID-19 cases.

Coverage of Treatment & Testing

UNHCR covers **100%** of test and treatment for refugee patients.



479 refugee patients have been admitted for COVID-19 treatment under UNHCR's referral care programme.



549 COVID-19 tests were covered under UNHCR's referral care programme.

Expansion of the MoPH COVID-19 Hotline



As of 1 October 2020, UNHCR has handed over its support in human resources to the national MOPH COVID-19 call centre operation to WHO. UNHCR continued to provide the call centre with telephony support until end of 2020. The 10 additional trained nurses continue to serve as operators and as well as a referral system for refugees calling to be immediately transferred to UNHCR for action. By the end of 2020, the hotline had received **138,435** calls.

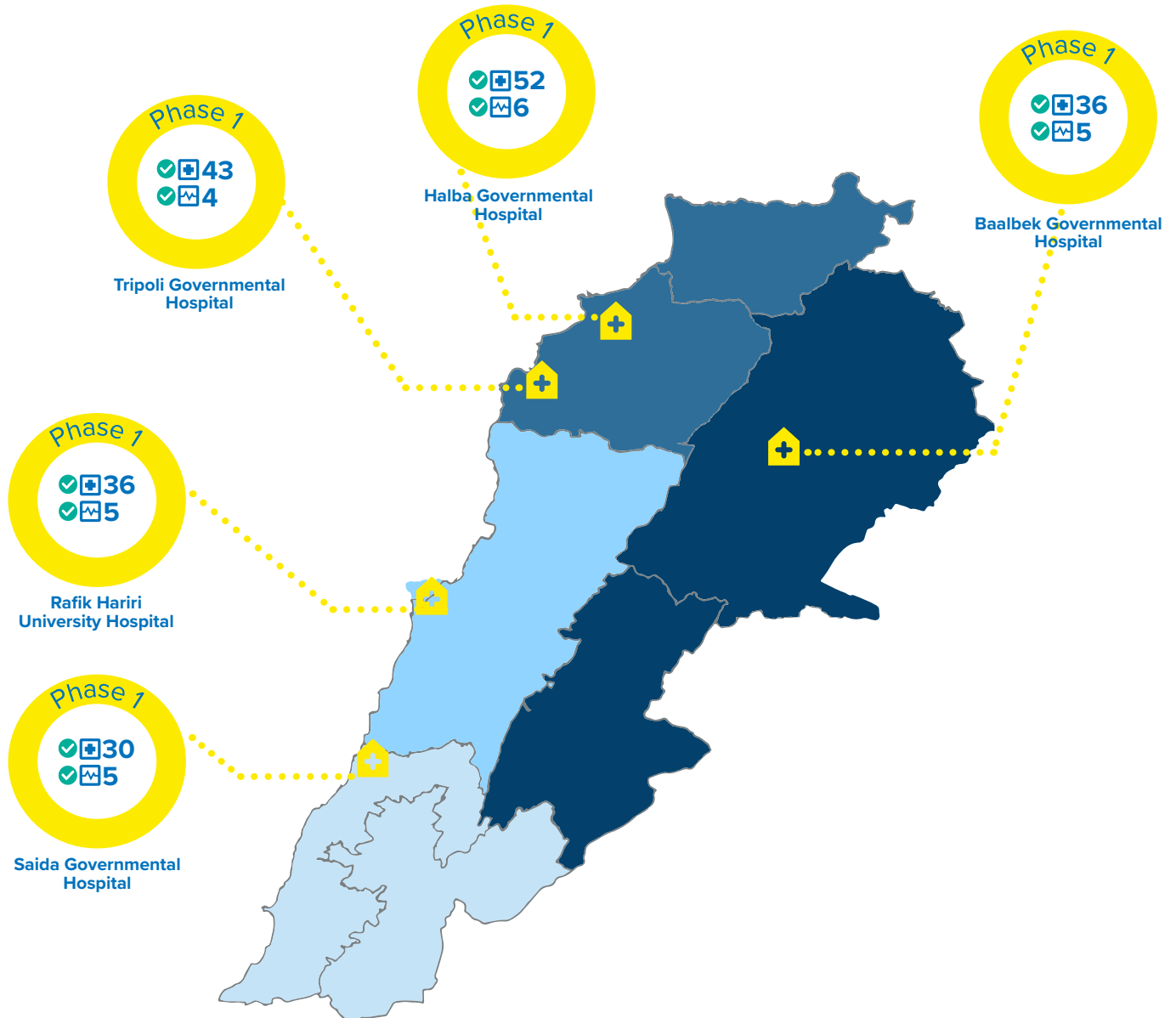
HOSPITAL EXPANSION

PHASE 1 - 100% COMPLETED

5
Hospitals

197
Additional hospital beds

25
Additional ICU beds



Beds ready for use

197 Additional hospital beds





25 Additional ICU beds

Total target over 3 phases

800 Additional hospital beds

100 Additional ICU beds

8 Dialysis beds

-  Hospital bed
-  ICU bed
-  Ready for use
-  In progress



Scan the QR code to watch our video on hospital expansion across Lebanon



UNHCR
The UN Refugee Agency

HOSPITAL EXPANSION

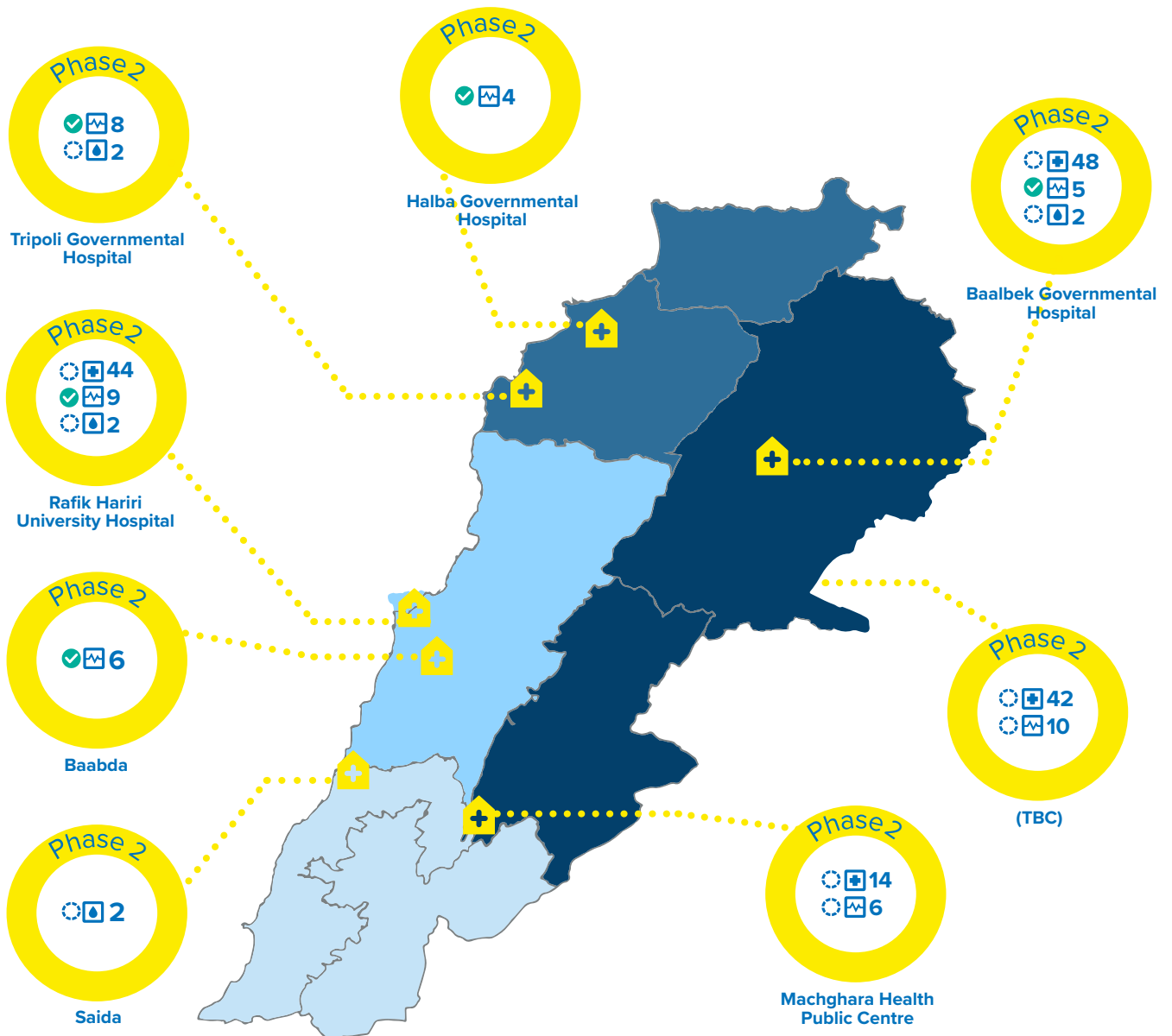
PHASE 2 - ONGOING

8
Hospitals

148
Additional hospital beds

48
Additional ICU beds

8
Dialysis beds



Beds ready for use

32 Additional ICU beds

Total target over 3 phases

800 Additional hospital beds

100 Additional ICU beds

8 Dialysis beds

- Hospital bed
- ICU bed
- Dialysis bed
- Ready for use
- In progress