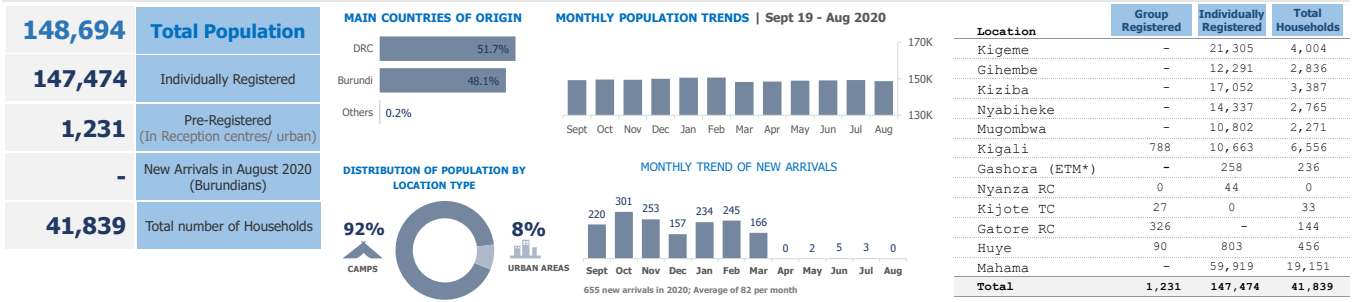


UNHCR Rwanda - Monthly Population Statistics

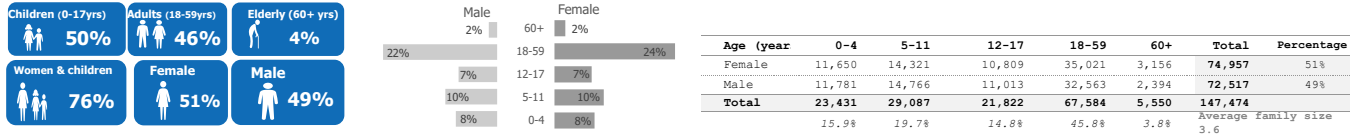
as of 31 August 2020



KEY POPULATION STATISTICS



DEMOGRAPHICS

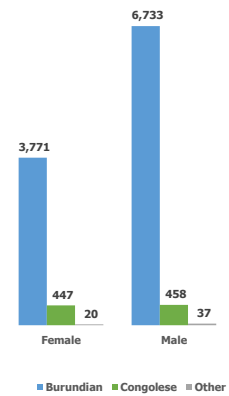


COUNTRIES OF ORIGIN

Country of Origin	0 - 4 years		5 - 11 years		12 - 17 years		18 - 59 years		60+ years		Total
	F	M	F	M	F	M	F	M	F	M	
Afghanistan	-	-	-	-	-	-	1	1	-	-	2
Angola	1	-	1	-	-	-	4	1	1	-	8
Burundi**	5,925	6,007	6,461	6,859	4,277	4,417	15,211	19,063	1,120	884	70,224
Chad	-	-	-	-	-	1	1	3	-	-	5
Central Africa	-	-	-	-	-	-	-	1	-	-	1
Cameroon	-	-	1	-	1	1	3	-	-	-	7
DR Congo	5,718	5,767	7,848	7,901	6,521	6,505	19,755	13,359	2,035	1,508	76,917
Eritrea*	1	4	3	-	9	71	34	92	-	-	214
Ethiopia*	-	-	-	-	-	1	4	5	-	1	11
Guinea	-	-	-	-	-	-	-	1	-	-	1
Haiti	-	-	-	1	-	-	-	-	-	-	1
Kenya	-	-	-	-	-	-	-	1	-	-	1
Somalia*	3	1	2	1	-	13	8	12	-	1	41
South Sudan	-	1	1	-	-	-	1	8	-	-	11
Sudan*	-	-	-	1	-	2	1	13	-	-	17
Tanzania	1	-	1	-	-	-	-	-	-	-	2
Uganda	-	-	1	-	-	-	-	-	-	-	1
Total	11,649	11,780	14,319	14,763	10,808	11,011	35,021	32,563	3,156	2,394	147,464

* Includes ETM population

URBAN POPULATION (GENDER AND NATIONALITY)



REFUGEES* FROM DEMOCRATIC REP. OF THE CONGO

Areas of origin	Population	Percentage
North Kivu	68,006	88.4%
South Kivu	6,615	8.6%
Haut-Katanga	1,286	1.7%
Ituri	144	0.2%
Maniema	127	0.2%
Kasai Orient	18	0.0%
Mai-Ndombe	11	0.0%
Equateur	7	0.0%
Kongo Centra	7	0.0%
Other	696	0.9%
Total	76,917	

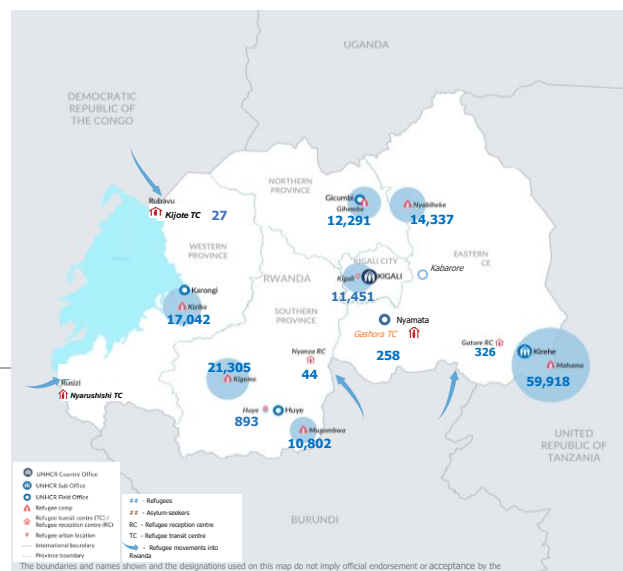
* Includes asylum-seekers

REFUGEES* FROM BURUNDI

Areas of origin	Population	Percentage
Kirundo	41,159	58.6%
Bujumbura Mairie	11,418	16.3%
Muyinga	8,440	12.0%
Ngozi	2,817	4.0%
Karuzi	1,239	1.8%
Cibitoke	744	1.1%
Kayanza	826	1.2%
Ruyigi	528	0.8%
Gitega	489	0.7%
Bubanza	299	0.4%
Other	2,265	3.2%
Total	70,224	

* Includes asylum-seekers

POPULATION DISTRIBUTION BY LOCATION IN RWANDA



ETM BREAKDOWN BY COO AND GENDER

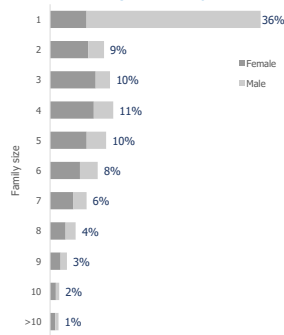
Country of Origin (ETM)	Female	Male	Total
Eritrea	45	158	203
Somalia	10	22	32
Sudan	1	14	15
South Sudan	0	1	1
Ethiopia	4	3	7
Total	60	198	258

SPECIFIC PROTECTION NEEDS

Specific Need	Count	Percentage
Child at risk	589	2.4%
Disability	4,913	20.1%
Family unity	509	2.1%
Older person at risk	2,000	8.2%
Serious medical condition	7,770	31.8%
SGBV	1,119	4.6%
Single parent	2,501	10.2%
LPPN	702	2.9%
Torture	662	2.7%
UASC	1,636	6.7%
Woman at risk	2,008	8.2%
Total	24,409	

An individual may have more than one specific need

FAMILY SIZE BREAKDOWN



Percentage represents proportion of family sizes to the total number of households

**Total number of Burundians is the individually registered plus the group registered (70224 + 1231 = 71455)

There are 833 Rwandan dependents of registered refugees. They are not included in the above breakdowns.

For More Information: <http://data.unhcr.org/drc/country.php?id=182> and <http://data2.unhcr.org/en/situations/burundi/location/2006>

Contact : Susan Carrera (E-mail: carrera@unhcr.org)

* ETM : Emergency Transit Mechanism