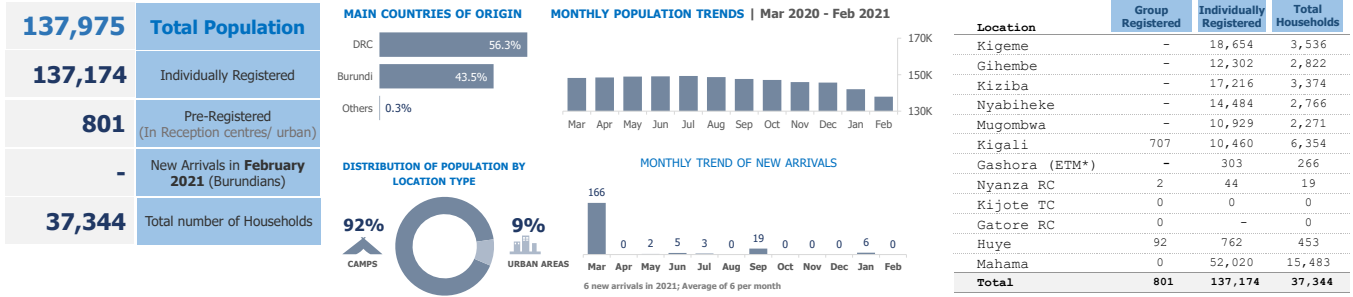


UNHCR Rwanda - Monthly Population Statistics

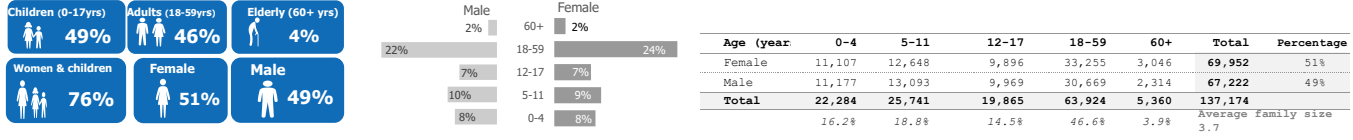
as of 28 February 2021



KEY POPULATION STATISTICS



DEMOGRAPHICS

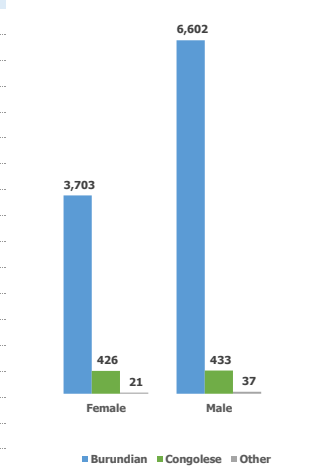


COUNTRIES OF ORIGIN

Country of Origin	0 - 4 years		5 - 11 years		12 - 17 years		18 - 59 years		60+ years		Total
	F	M	F	M	F	M	F	M	F	M	
Afghanistan	-	-	-	-	-	-	1	1	-	-	2
Angola	2	-	1	-	-	-	4	1	1	-	9
Burundi**	5,385	5,433	5,025	5,298	3,459	3,555	12,842	16,470	948	741	59,156
Chad	-	-	-	-	-	-	1	1	3	-	5
Central Africa	-	-	-	-	-	-	-	-	1	-	1
Cameroon	-	-	1	-	1	1	1	3	-	-	7
DR Congo	5,712	5,734	7,615	7,790	6,434	6,394	20,347	13,955	2,097	1,571	77,649
Eritrea*	3	5	-	1	1	9	36	119	-	-	174
Ethiopia*	-	-	-	-	-	-	1	4	-	1	6
Guinea	-	-	-	-	-	-	-	1	-	-	1
Haiti	-	-	-	1	-	-	-	-	-	-	1
Kenya	-	-	-	-	-	-	-	1	-	-	1
Nigeria*	-	1	-	-	-	-	1	-	-	-	2
Somalia*	4	2	2	1	-	6	12	18	-	1	46
South Sudan	-	-	1	1	-	-	1	7	-	-	10
Sudan*	-	2	1	1	1	3	7	85	-	-	100
Tanzania	1	-	1	-	-	-	1	-	-	-	3
Uganda	-	-	1	-	-	-	-	-	-	-	1
Total	11,107	11,177	12,648	13,093	9,896	9,969	33,255	30,669	3,046	2,314	137,174

* Includes ETM population

URBAN POPULATION (GENDER AND NATIONALITY)



REFUGEES* FROM DEMOCRATIC REP. OF THE CONGO

Areas of origin	Population	Percentage
North Kivu	68,707	88.5%
South Kivu	6,659	8.6%
Haut-Katanga	1,302	1.7%
Ituri	144	0.2%
Maniema	116	0.1%
Kasai Orient	18	0.0%
Mai-Ndombe	11	0.0%
Equateur	7	0.0%
Kongo Centra	7	0.0%
Other	678	0.9%
Total	77,649	

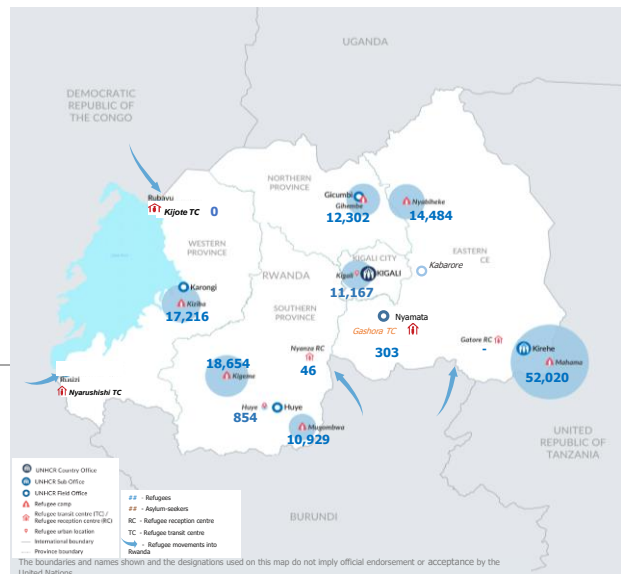
* Includes asylum-seekers

REFUGEES* FROM BURUNDI

Areas of origin	Population	Percentage
Kirundo	33,639	56.9%
Bujumbura Mairie	11,259	19.0%
Muyinga	6,157	10.4%
Ngozi	2,314	3.9%
Karuzi	1,115	1.9%
Cibitoke	547	0.9%
Kayanza	729	1.2%
Ruyigi	495	0.8%
Gitega	449	0.8%
Bubanza	283	0.5%
Other	2,169	3.7%
Total	59,156	

* Includes asylum-seekers

POPULATION DISTRIBUTION BY LOCATION IN RWANDA

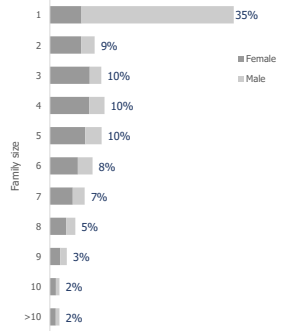


SPECIFIC PROTECTION NEEDS

Specific Need	Count	Percentage
Child at risk	586	2.6%
Disability	4,355	19.4%
Family unity	481	2.1%
Older person at risk	1,719	7.6%
Serious medical condition	6,947	30.9%
SGBV	1,105	4.9%
Single parent	2,457	10.9%
LPPN	735	3.3%
Torture	680	3.0%
UASC	1,425	6.3%
Woman at risk	1,996	8.9%
Total	22,486	

An individual may have more than one specific need

FAMILY SIZE BREAKDOWN



Percentage represents proportion of family sizes to the total number of households

ETM BREAKDOWN BY COO AND GENDER

Country of Origin (ETM)	Female	Male	Total
Eritrea	38	125	163
Somalia	15	22	37
Sudan	9	89	98
Nigeria	1	1	2
Ethiopia	1	2	3
Total	64	239	303

**Total number of Burundians is the individually registered plus the group registered (59156 + 801 = 59957)

There are 733 Rwandan dependents of registered refugees. They are not included in the above breakdowns.

For More Information: <https://data2.unhcr.org/en/country/rwa/>

Contact: rwakireg@unhcr.org

* ETM : Emergency Transit Mechanism