

Introduction:

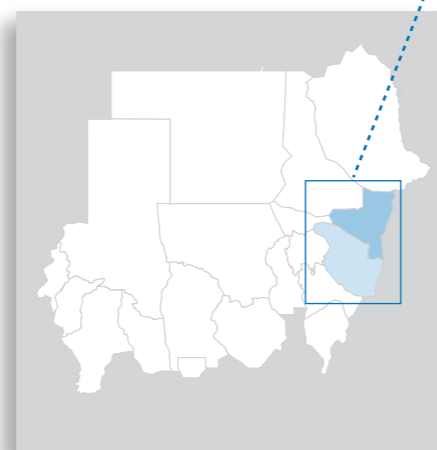
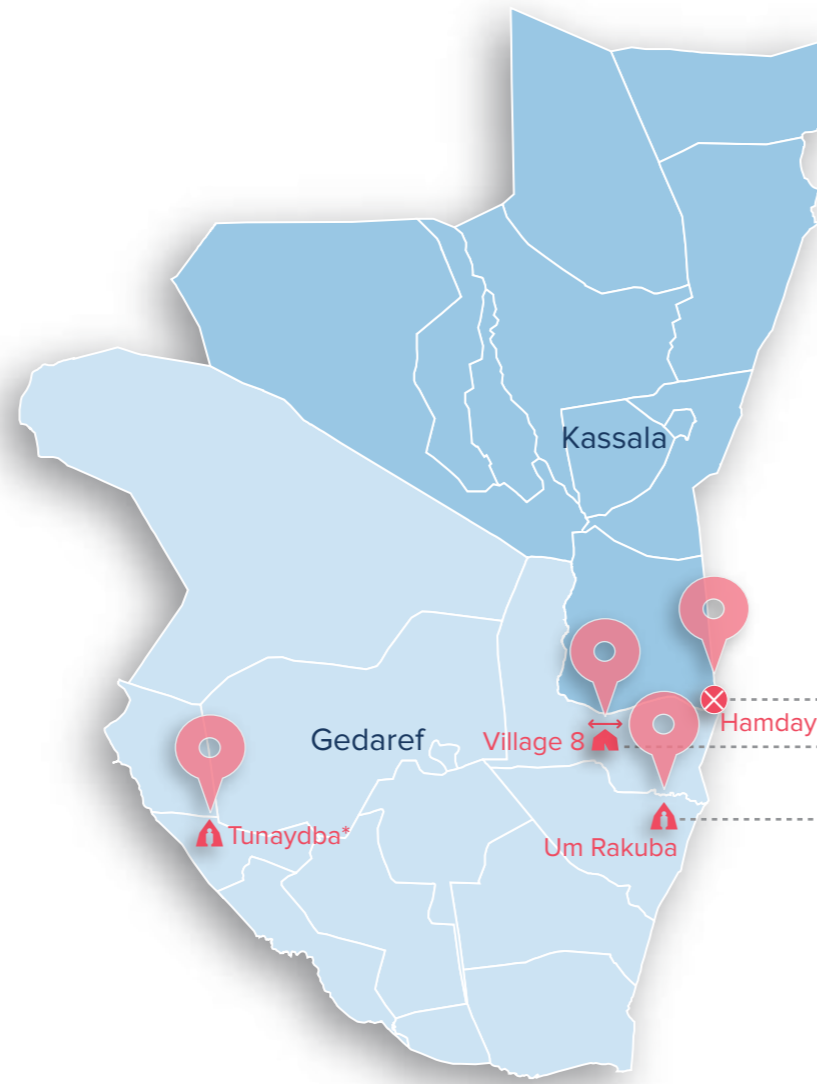
Beginning of November 2020, UNHCR has recorded an influx of asylum seekers at border entry points in East Sudan from Ethiopia, after military confrontations in the Tigray region in northern Ethiopia.

UNHCR's teams at the border areas of the eastern Sudanese states of Kassala and Gedaref are working with the Sudanese Commissioner of Refugees (CoR), local authorities and partners to monitor and respond to the situation, as well as mobilizing resources to provide life-saving assistance services to the new arrivals. Inter-agency coordination and contingency response planning is well underway.

List of Partners

- 1• American Refugee Committee (ARC)
- 2• Commission of Refugees (CoR)
- 3• Concern Worldwide (CWW)
- 4• Cooperazione Internazionale (COOPI)
- 5• Danish Refugee Council (DRC)
- 6• IHH - Humanitarian Relief Foundation (IHH)
- 7• Islamic Relief Worldwide (IRW)
- 8• Italian Agency for Development Cooperation (AICS)
- 9• Médecins Sans Frontières (MSF)
- 10• Medical Corps (MC)
- 11• Ministry of Health (MoH)
- 12• Ministry of Social Welfare (MoSW)
- 13• Muslim Aid- UK (Muslim Aid)
- 14• Norwegian Church Aid (NCA)
- 15• Plan International Sudan (PIS)
- 16• Relief International (RI)
- 17• Save the Children (SCI)
- 18• Sudanese Red Crescent Society (SRCS)
- 19• Tawaki Organization (TAWAKI)
- 20• United Nations Development Programme (UNDP)
- 21• United Nations High Commissioner for Refugees (UNHCR)
- 22• United Nations International Children's Emergency Fund (UNICEF)
- 23• United Nations Population Fund (UNFPA)
- 24• United Peace Organization (UPO)
- 25• Welthungerhilfe (WHH)
- 26• World Food Programme (WFP)
- 27• World Health Organization (WHO)
- 28• ZOA International Sudan (ZOA)

* Please Note: Agency/Partner activities started in Tunaydba Camp on 25 December 2020 and will be included in next weekly Ethiopia Emergency Situation 3Ws.



Hamdayet (Entry Point)
15 Partners Operating

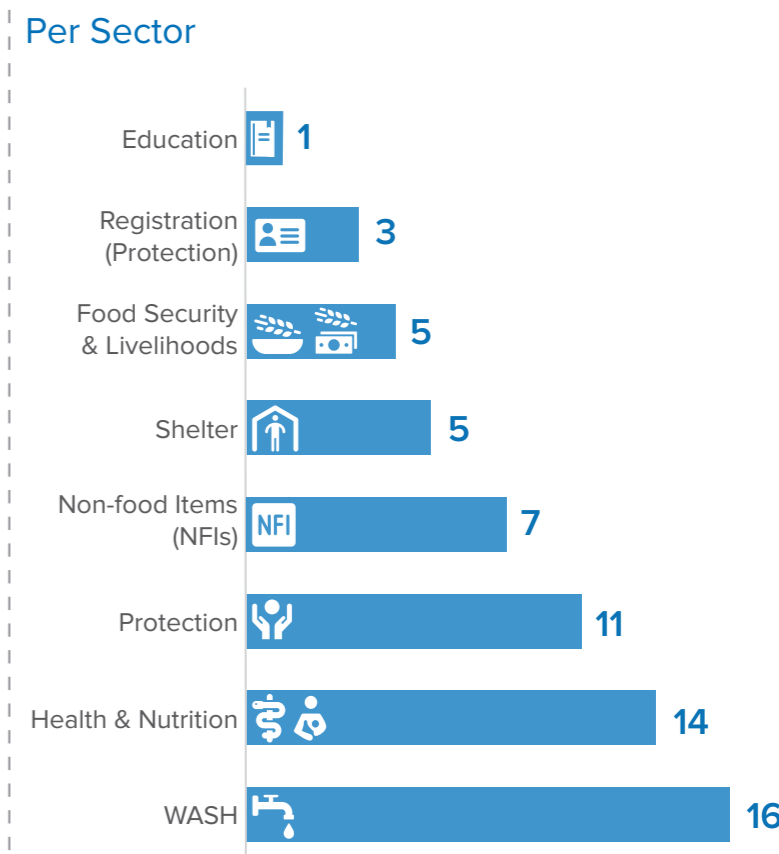
- ARC, CoR, PIS, SRCS, UNHCR
- COR, UNHCR
- CWW, MSF, UNFPA, UNHCR, UNICEF, WHO
- Muslim Aid, WFP
- NFI COR, UNHCR
- UNHCR
- CWW, COOPI, MSF, TAWAKI, UNHCR, UNICEF, WFP, WHH

Village 8 (Transit center)
12 Partners Operating

- MoSW, PIS, SRCS, UNHCR
- COR, UNHCR
- MoH, MSF, SRCS, UNFPA, WHO
- IHH, WFP
- NFI COR, IHH, UNHCR
- IHH, TAWAKI, UNHCR

Um Rakuba (Camp)
21 Partners Operating

- ARC, DRC, PIS, SCI, SRCS, UNFPA, UNHCR
- CoR, UNHCR
- SCI
- AICS, ARC, CWW, DRC, MSF, MC, RI, SRCS, UNDP, UNFPA, UNICEF
- IHH, IRW, Muslim Aid, UNDP, WFP
- NFI ARC, CoR, CWW, DRC, IHH, UNHCR, WHH
- AICS, CWW, DRC, IHH, UNHCR, WFP
- DRC, CWW, IHH, IRW, SRCS, UNFPA, UNHCR, UNICEF, UPO, WFP, WHH, ZOA



	Protection	Registration	Education	Health & Nutrition	Food Security & Livelihoods	NFI	Shelter	WASH	Camp Management	Site Coordination
Hamdayet	5	2	0	6	2	2	1	8	0	0
Village 8	4	2	0	5	2	3	0	3	0	0
Um Rakuba	7	3	1	11	5	7	5	13	0	0

Legend: No partner (lightest blue), 1-3 (light blue), 4-6 (medium blue), 7 and above (darkest blue)