

Introduction:

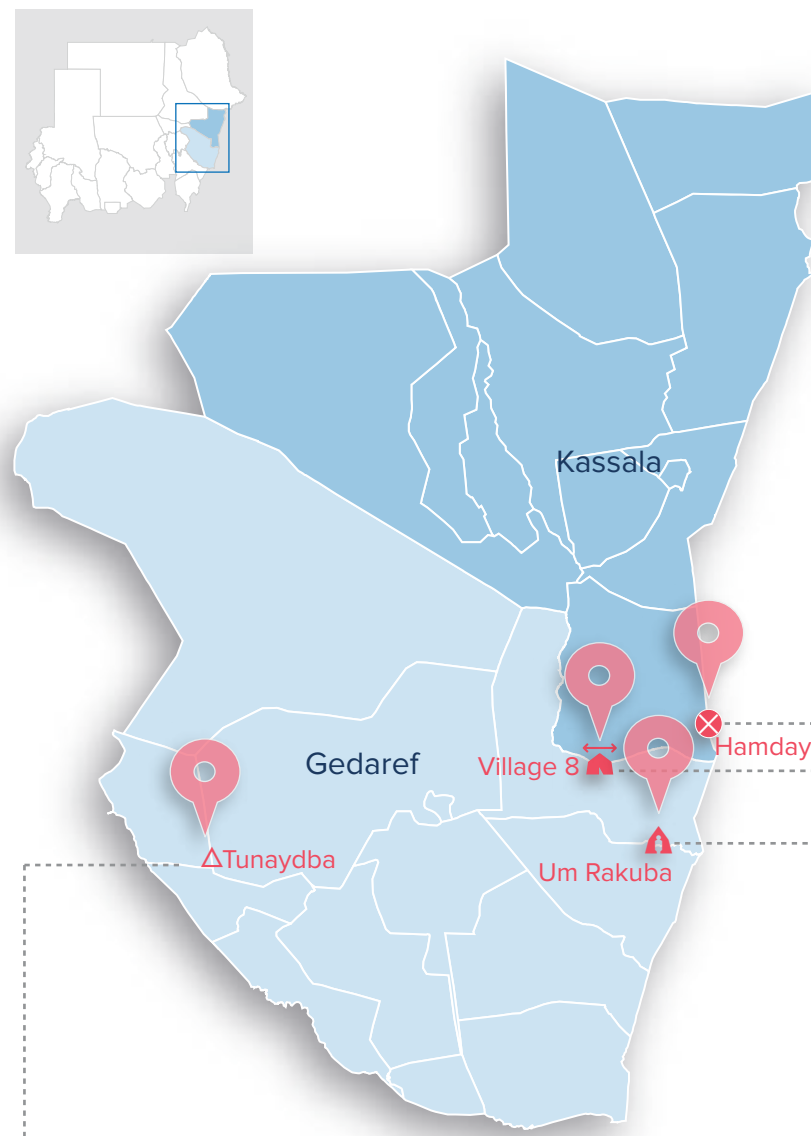
Beginning of November 2020, UNHCR has recorded an influx of asylum seekers at border entry points in East Sudan from Ethiopia, after military confrontations in the Tigray region in northern Ethiopia.

UNHCR's teams at the border areas of the eastern Sudanese states of Kassala and Gedaref are working with the Sudanese Commissioner of Refugees (CoR), local authorities and partners to monitor and respond to the situation, as well mobilizing resources to provide life-saving assistance services to the new arrivals. Inter-agency coordination and contingency response planning is well underway.

List of Partners

01. Agency for Technical Cooperation and Development (ACTED)
02. American Refugee Committee (ALIGHT)
03. CARE International Switzerland (CIS)
04. Commission of Refugees (CoR)
05. Cooperazione Internazionale (COOPI)
06. Concern Worldwide (CWW)
07. Danish Refugee Council (DRC)
08. Food and Agriculture Organization (FAO)
09. Forests National Corporation (FNC)
10. Global Aid Hand (GAH)
11. International Medical Corps (IMC)
12. International Organization for Migration (IOM)
13. International Rescue Committee (IRC)
14. Islamic Relief Worldwide (IRW)
15. Italian Agency for Development Cooperation (AICS)
16. Medair Organization (MEDAIR)
17. Médecins Sans Frontières (MSF)
18. Mercy Corps (MC)
19. Ministry of Health (MoH)
20. Ministry of Social Welfare (MoSW)
21. Muslim Aid- UK (Muslim Aid)
22. Norwegian Church Aid (NCA)
23. Norwegian Refugee Council (NRC)
24. Plan International Sudan (PIS)
25. Qatar Charity (QC)
26. Save the Children (SCI)
27. Solidarités International (SI)
28. Sudanese Development Call Organization (NIDAA)
29. Sudanese Red Crescent Society (SRCS)
30. Tawaki Organization (TAWAKI)
31. United Nations Development Programme (UNDP)
32. United Nations High Commissioner for Refugees (UNHCR)
33. United Nations International Children's Emergency Fund (UNICEF)
34. United Nations Population Fund (UNFPA)
35. United Peace Organization (UPO)
36. World Food Programme (WFP)
37. Welthungerhilfe (WHH)
38. World Health Organization (WHO)
39. ZOA International Sudan (ZOA)

The boundaries and names shown and the designations used on this map do not imply official endorsement or acceptance by the United Nations.



Hamdayet (Entry Point)
17 Partners Operating

- UNHCR
- CoR, PIS, SRCS, UNHCR
- CoR, UNHCR
- CWW, MSF, UNDP, UNFPA, UNHCR, WHO
- FAO, Muslim Aid, UNDP, WFP
- CoR, UNDP, UNHCR
- COOPI, MSF, TAWAKI, UNHCR, UNICEF, WFP, WHH
- FNC

Village 8 (Transit center)
15 Partners Operating

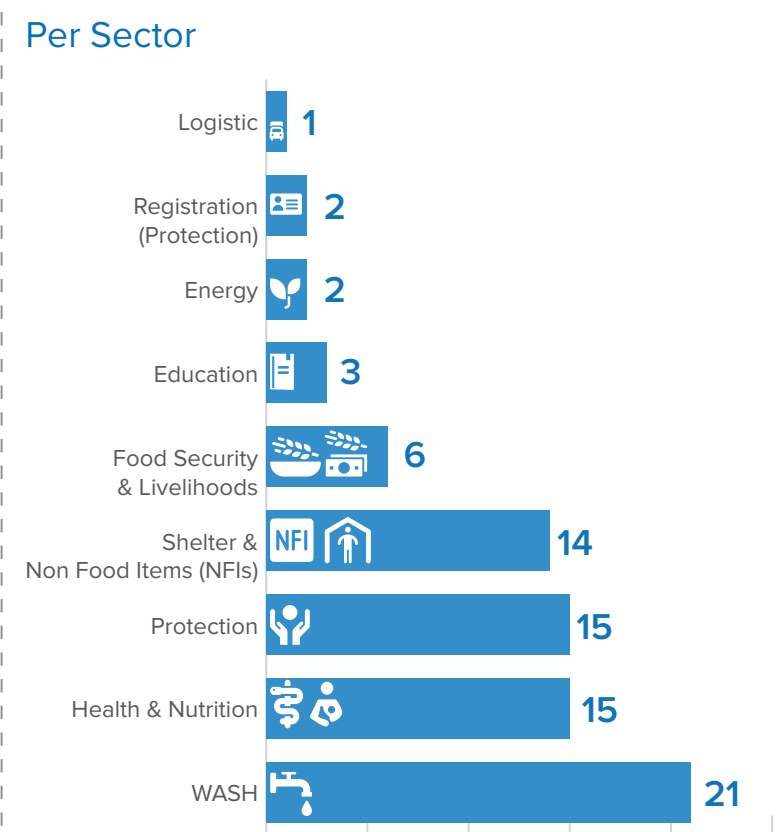
- UNHCR
- MoSW, SRCS, UNHCR
- CoR, UNHCR
- MoH, MSF, SRCS, UNFPA, WHO
- Muslim Aid, WFP
- CoR, UNHCR
- COOPI, CWW, TAWAKI, UNHCR, UNICEF, WHO
- FNC

Um Rakuba (Camp)
28 Partners Operating

- UNHCR
- ALIGHT, DRC, GAH, IOM, NIDAA, PIS, SCI, SRCS, UNFPA, UNHCR, WHH
- CoR, UNHCR
- IRW, NRC, SCI
- AICS, ALIGHT, CWW, DRC, IMC, IRC, MSF, SRCS, UNDP, UNFPA, UNICEF, WHO
- IRW, Muslim Aid, NRC, UNDP, WFP
- AICS, ALIGHT, CoR, CWW, DRC, IRW, NRC, UNDP, UNHCR, WHH, ZOA
- AICS, COOPI, CWW, DRC, IOM, IRC, IRW, SRCS, UNDP, UNFPA, UNHCR, UNICEF, UPO, WFP, WHH, WHO
- WHH
- FNC, UNDP

Tunaydbah (Settlement)
20 Partners Operating

- UNHCR
- GAH, IRC, NCA, SCI, UNFPA, UNHCR
- CoR, UNHCR
- ALIGHT, IRC, MEDAIR, UNFPA, WHO
- Muslim Aid, WFP
- ACTED, MEDAIR, QC, UNHCR
- CWW, IOM, IRC, MEDAIR, NCA, SI, UNICEF, WHO
- FNC, UNDP



	Protection	Registration	Education	Health	Nutrition	Food Security	Livelihoods	NFI	Shelter	Logistic	WASH	Energy	Camp Management	Site Coordination
Hamdayet	4	2	0	6	4	3	0	7	1					
Village 8	3	2	0	5	2	2	0	6	1					
Um Rakuba	11	2	3	12	5	11	1	16	2					
Tunaydibah	6	2	0	5	2	4	0	8	2					
	0													

Legend: No partner (lightest blue), 1-3 (light blue), 4-6 (medium blue), 7 and above (darkest blue)