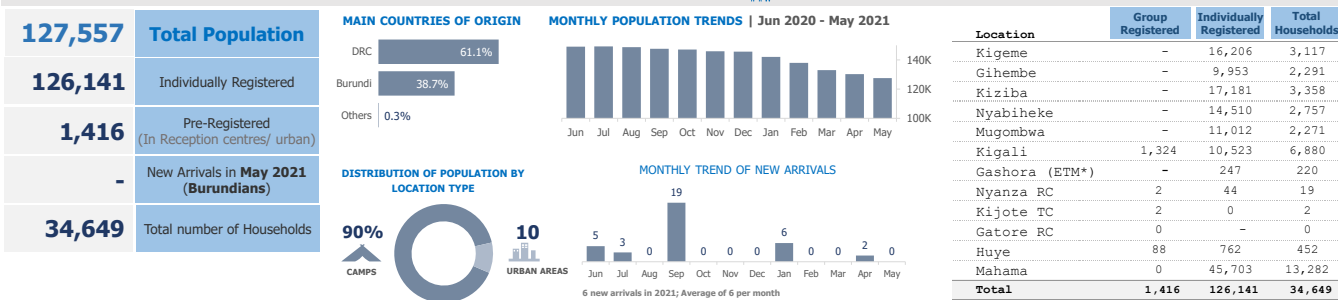


# UNHCR Rwanda - Monthly Population Statistics

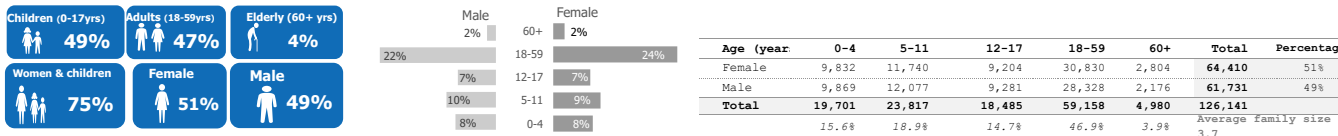
as of 31 May 2021



## KEY POPULATION STATISTICS



## DEMOGRAPHICS

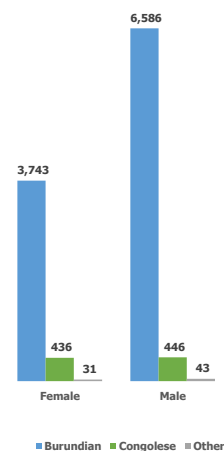


## COUNTRIES OF ORIGIN

Country of Origin	0 - 4 years		5 - 11 years		12 - 17 years		18 - 59 years		60+ years		Total
	F	M	F	M	F	M	F	M	F	M	
Afghanistan	-	-	-	-	-	-	1	1	-	-	2
Angola	1	-	2	-	-	-	4	1	1	-	9
Burundi**	4,132	4,145	4,035	4,223	2,720	2,840	10,371	14,120	720	620	47,926
Chad	-	-	-	-	-	1	1	4	-	-	6
Central Africa	-	-	-	-	-	-	-	1	-	-	1
Cameroon	-	-	1	-	1	1	1	3	-	-	7
DR Congo	5,693	5,717	7,694	7,848	6,478	6,423	20,401	13,996	2,083	1,554	77,887
Eritrea*	3	2	2	2	4	10	31	95	-	-	149
Ethiopia*	-	-	-	-	-	-	2	4	-	1	7
Guinea	-	-	-	-	-	-	-	1	-	-	1
Haiti	-	-	-	1	-	-	-	-	-	-	1
Kenya	-	-	-	-	-	-	-	1	-	-	1
Nigeria*	-	1	-	-	-	-	1	-	-	-	2
Somalia*	3	2	2	1	-	5	8	13	-	1	35
South Sudan	-	-	1	1	-	-	1	7	-	-	10
Sudan*	-	2	1	1	1	1	7	81	-	-	94
Tanzania	-	-	1	-	-	-	1	-	-	-	2
Uganda	-	-	1	-	-	-	-	-	-	-	1
<b>Total</b>	<b>9,832</b>	<b>9,869</b>	<b>11,740</b>	<b>12,077</b>	<b>9,204</b>	<b>9,281</b>	<b>30,830</b>	<b>28,328</b>	<b>2,804</b>	<b>2,176</b>	<b>126,141</b>

\* Includes ETM population

## URBAN POPULATION (GENDER AND NATIONALITY)



## REFUGEES\* FROM DEMOCRATIC REP. OF THE CONGO

Areas of origin	Count	Percentage
North Kivu	69,187	88.8%
South Kivu	6,661	8.6%
Haut-Katanga	1,302	1.7%
Ituri	144	0.2%
Maniema	120	0.2%
Kasai Orient	18	0.0%
Mai-Ndombe	11	0.0%
Equateur	7	0.0%
Kongo Centra	7	0.0%
Other	430	0.6%
<b>Total</b>	<b>77,887</b>	

\* Includes asylum-seekers

## REFUGEES\* FROM BURUNDI

Areas of origin	Count	Percentage
Kirundo	24,591	51.3%
Bujumbura Mairie	17,171	23.3%
Muyinga	4,659	9.7%
Ngozi	2,019	4.2%
Karuzi	1,041	2.2%
Cibitoke	467	1.0%
Kayanza	656	1.4%
Ruyigi	450	0.9%
Gitega	429	0.9%
Bubanza	268	0.6%
Other	2,175	4.5%
<b>Total</b>	<b>47,926</b>	

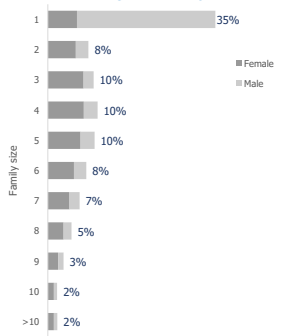
\* Includes asylum-seekers

## SPECIFIC PROTECTION NEEDS

Specific Need	Count	Percentage
Child at risk	565	2.6%
Disability	4,137	18.8%
Family unity	438	2.0%
Older person at risk	1,920	8.7%
Serious medical condition	6,661	30.2%
SGBV	1,128	5.1%
Single parent	2,439	11.1%
LPPN	705	3.2%
Torture	712	3.2%
UASC	1,338	6.1%
Woman at risk	1,983	9.0%
<b>Total</b>	<b>22,026</b>	

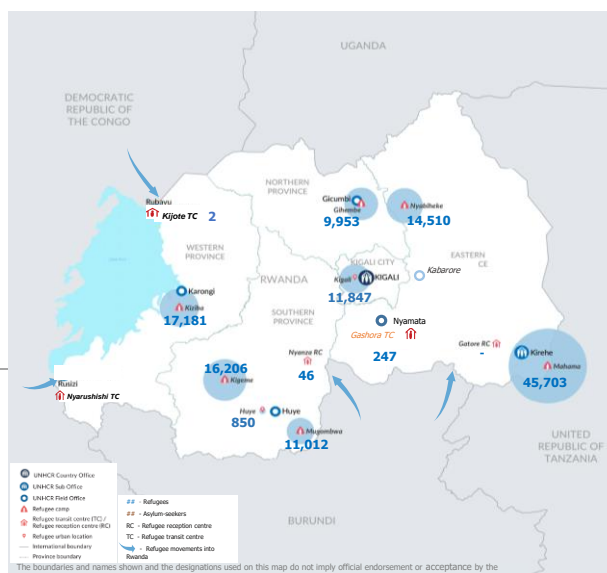
An individual may have more than one specific need

## FAMILY SIZE BREAKDOWN



Percentage represents proportion of family sizes to the total number of households

## POPULATION DISTRIBUTION BY LOCATION IN RWANDA



## ETM BREAKDOWN BY COO AND GENDER

Country of Origin (ETM)	Female	Male	Total
Eritrea	28	94	122
Somalia	10	16	26
Sudan	9	83	92
Nigeria	1	1	2
Ethiopia	2	2	4
<b>Total</b>	<b>50</b>	<b>196</b>	<b>246</b>

\*\*Total number of Burundians is the individually registered plus the group registered (47926 + 1416 = 49342)

There are 675 Rwandan dependents of registered refugees. They are not included in the above breakdowns.

For More Information: <https://data2.unhcr.org/en/country/rw/>

Contact: [rwakireg@unhcr.org](mailto:rwakireg@unhcr.org)

\* ETM : Emergency Transit Mechanism