

UNHCR Rwanda - Monthly Population Statistics

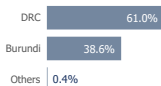
as of 31 August 2021



KEY POPULATION STATISTICS

127,382	Total Population
126,392	Individually Registered
990	Pre-Registered (In Reception centres/ urban)
2	New Arrivals in August 2021 (Burundians)
34,805	Total number of Households

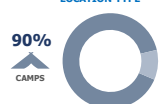
MAIN COUNTRIES OF ORIGIN



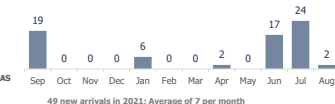
MONTHLY POPULATION TRENDS | Sept 2020 - Aug 2021



DISTRIBUTION OF POPULATION BY LOCATION TYPE

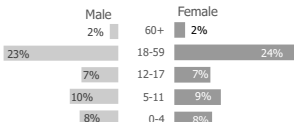
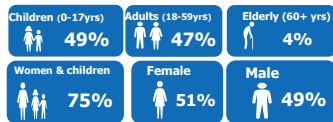


MONTHLY TREND OF NEW ARRIVALS



Location	Group Registered	Individually Registered	Total Households
Kigeme	-	15,802	3,031
Gihembe	-	9,922	2,277
Kiziba	-	16,864	3,282
Nyabiheke	-	14,550	2,755
Mugombwa	-	11,058	2,270
Kigali	944	11,086	6,943
Gashora (ETM*)	-	364	315
Nyanza RC	1	0	1
Kijote TC	2	0	2
Gatore RC	0	-	0
Huye	43	808	451
Mahama	0	45,938	13,478
Total	990	126,392	34,805

DEMOGRAPHICS

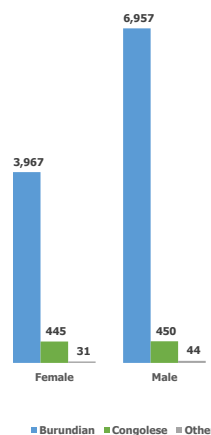


Age (year)	0-4	5-11	12-17	18-59	60+	Total	Percentage
Female	9,623	11,865	9,202	30,847	2,758	64,295	51%
Male	9,703	12,172	9,265	28,798	2,159	62,097	49%
Total	19,326	24,037	18,467	59,645	4,917	126,392	
	15.3%	19.0%	14.6%	47.2%	3.9%		Average family size 3.7

COUNTRIES OF ORIGIN

Country of Origin	0 - 4 years		5 - 11 years		12 - 17 years		18 - 59 years		60+ years		Total
	F	M	F	M	F	M	F	M	F	M	
Afghanistan	-	-	-	-	-	-	1	1	-	-	2
Angola	1	-	2	-	-	-	4	1	1	-	9
Burundi**	4,074	4,100	4,073	4,262	2,692	2,811	10,388	14,527	695	612	48,234
Chad	-	-	-	-	-	1	1	4	-	-	6
Central Africa	-	-	-	-	-	-	-	1	-	-	1
Cameroon	-	-	1	-	1	1	2	3	-	-	8
DR Congo	5,536	5,592	7,780	7,904	6,501	6,436	20,387	13,970	2,062	1,544	77,712
Eritrea*	8	5	3	3	5	10	38	150	-	-	222
Ethiopia*	-	-	-	-	-	1	3	4	-	1	9
Guinea	-	-	-	-	-	-	-	1	-	-	1
Haiti	-	-	-	1	-	-	-	-	-	-	1
Kenya	-	-	-	-	-	-	-	1	-	-	1
Nigeria*	-	1	-	-	-	-	1	-	-	-	2
Palestine	-	-	-	-	-	-	-	1	-	-	1
Somalia*	3	2	2	1	-	4	9	11	-	1	33
South Sudan	-	-	1	1	-	-	1	8	-	-	11
Sudan*	1	3	1	-	3	1	11	115	-	1	136
Tanzania	-	-	1	-	-	-	1	-	-	-	2
Uganda	-	-	1	-	-	-	-	-	-	-	1
Total	9,623	9,703	11,865	12,172	9,202	9,265	30,847	28,798	2,758	2,159	126,392

URBAN POPULATION (GENDER AND NATIONALITY)



* Includes ETM population

REFUGEES* FROM DEMOCRATIC REP. OF THE CONGO

Areas of origin	Population	Percentage
North Kivu	69,067	88.9%
South Kivu	6,629	8.5%
Haut-Katanga	1,297	1.7%
Ituri	136	0.2%
Maniema	122	0.2%
Kasai Orient	18	0.0%
Mai-Ndombe	11	0.0%
Equateur	7	0.0%
Kongo Centra	2	0.0%
Other	423	0.5%
Total	77,712	

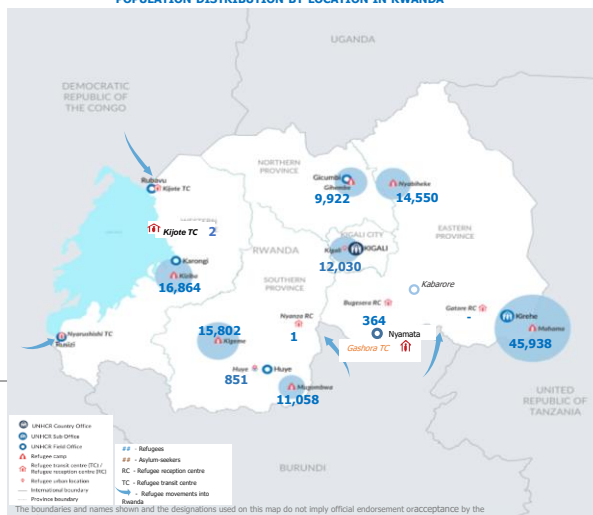
* Includes asylum-seekers

REFUGEES* FROM BURUNDI

Areas of origin	Population	Percentage
Kirundo	24,473	50.7%
Bujumbura Mairie	11,489	23.8%
Muyinga	4,669	9.7%
Ngozi	2,066	4.3%
Karuzi	1,065	2.2%
Cibitoke	494	1.0%
Kayanza	678	1.4%
Ruyigi	455	0.9%
Gitega	449	0.9%
Bubanza	279	0.6%
Other	2,117	4.4%
Total	48,234	

* Includes asylum-seekers

POPULATION DISTRIBUTION BY LOCATION IN RWANDA



ETM BREAKDOWN BY COO AND GENDER

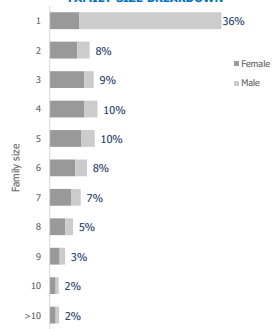
Country of Origin (ETM)	Female	Male	Total
Chad	0	1	1
Cameroon	1	0	1
South Sudan	0	1	1
Eritrea	42	153	195
Somalia	11	13	24
Sudan	16	118	134
Nigeria	1	1	2
Ethiopia	3	3	6
Total	74	290	364

SPECIFIC PROTECTION NEEDS

Specific Need	Population	Percentage
Child at risk	425	2.0%
Disability	2,110	10.2%
Family unity	456	2.2%
Older person at risk	1,899	9.1%
Serious medical condition	7,204	34.7%
SGBV	1,222	5.9%
Single parent	2,450	11.8%
LPPN	1,223	5.9%
Torture	717	3.4%
UASC	1,074	5.2%
Woman at risk	2,007	9.7%
Total	20,787	

An individual may have more than one specific need

FAMILY SIZE BREAKDOWN



Percentage represents proportion of family sizes to the total number of households

**Total number of Burundians is the individually registered plus the group registered (48234 + 990 = 49224)

There are 689 Rwandan dependents of registered refugees. They are not included in the above breakdowns.

For More Information: <https://data2.unhcr.org/en/country/rwa/>

Contact: rwakireg@unhcr.org

* ETM : Emergency Transit Mechanism