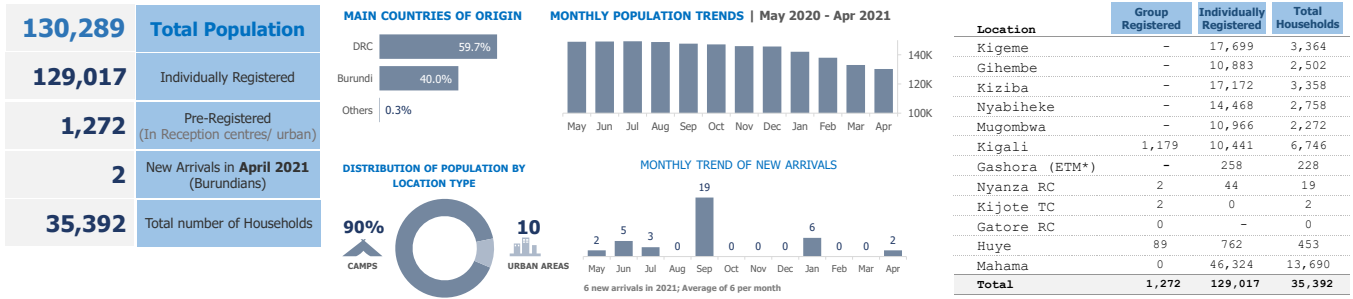


UNHCR Rwanda - Monthly Population Statistics

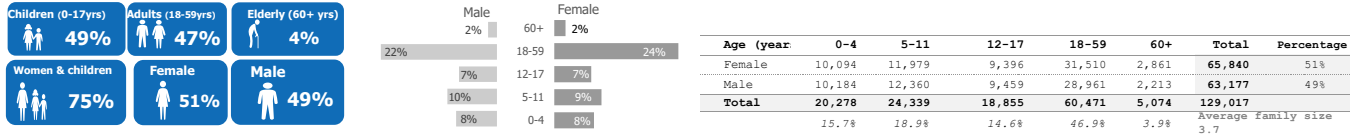
as of 30 April 2021



KEY POPULATION STATISTICS



DEMOGRAPHICS

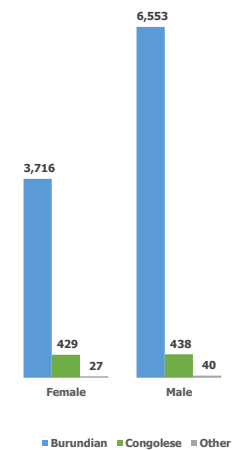


COUNTRIES OF ORIGIN

Country of Origin	0 - 4 years		5 - 11 years		12 - 17 years		18 - 59 years		60+ years		Total
	F	M	F	M	F	M	F	M	F	M	
Afghanistan	-	-	-	-	-	-	1	1	-	-	2
Angola	1	-	2	-	-	-	4	1	1	-	9
Burundi**	4,445	4,476	4,282	4,541	2,919	3,025	11,062	14,734	772	651	50,907
Chad	-	-	-	-	-	1	1	4	-	-	6
Central Africa	-	-	-	-	-	-	-	1	-	-	1
Cameroon	-	-	1	-	1	1	1	3	-	-	7
DR Congo	5,642	5,699	7,686	7,814	6,472	6,415	20,389	14,013	2,088	1,560	77,778
Eritrea*	3	4	2	1	3	9	32	97	-	-	151
Ethiopia*	-	-	-	-	-	-	2	4	-	1	7
Guinea	-	-	-	-	-	-	-	1	-	-	1
Haiti	-	-	-	1	-	-	-	-	-	-	1
Kenya	-	-	-	-	-	-	-	1	-	-	1
Nigeria*	-	1	-	-	-	-	1	-	-	-	2
Somalia*	3	2	2	1	-	6	8	14	-	1	37
South Sudan	-	-	1	1	-	-	1	7	-	-	10
Sudan*	-	2	1	1	1	2	7	80	-	-	94
Tanzania	-	-	1	-	-	-	1	-	-	-	2
Uganda	-	-	1	-	-	-	-	-	-	-	1
Total	10,094	10,184	11,979	12,360	9,396	9,459	31,510	28,961	2,861	2,213	129,017

* Includes ETM population

URBAN POPULATION (GENDER AND NATIONALITY)



REFUGEES* FROM DEMOCRATIC REP. OF THE CONGO

Areas of origin	Population	Percentage
North Kivu	69,111	88.9%
South Kivu	6,658	8.6%
Haut-Katanga	1,298	1.7%
Ituri	144	0.2%
Maniema	118	0.2%
Kasai Orient	18	0.0%
Mai-Ndombe	11	0.0%
Equateur	7	0.0%
Kongo Centra	7	0.0%
Other	406	0.5%
Total	77,778	

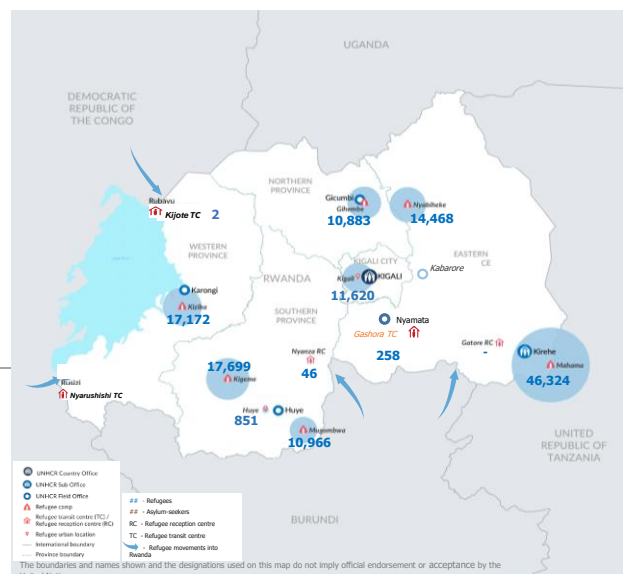
* Includes asylum-seekers

REFUGEES* FROM BURUNDI

Areas of origin	Population	Percentage
Kirundo	27,004	53.0%
Bujumbura Mairie	11,171	21.9%
Muyinga	5,083	10.0%
Ngozi	2,105	4.1%
Karuzi	1,070	2.1%
Cibitoke	501	1.0%
Kayanza	667	1.3%
Ruyigi	464	0.9%
Gitega	436	0.9%
Bubanza	271	0.5%
Other	2,135	4.2%
Total	50,907	

* Includes asylum-seekers

POPULATION DISTRIBUTION BY LOCATION IN RWANDA

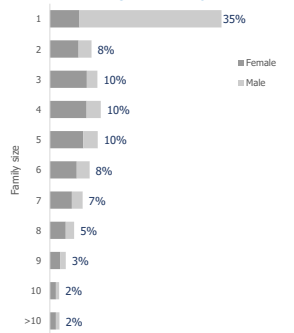


SPECIFIC PROTECTION NEEDS

Specific Need	Population	Percentage
Child at risk	572	2.6%
Disability	4,145	18.7%
Family unity	450	2.0%
Older person at risk	1,976	8.9%
Serious medical condition	6,649	30.0%
SGBV	1,135	5.1%
Single parent	2,439	11.0%
LPPN	710	3.2%
Torture	720	3.3%
UASC	1,365	6.2%
Woman at risk	1,985	9.0%
Total	22,146	

An individual may have more than one specific need

FAMILY SIZE BREAKDOWN



Percentage represents proportion of family sizes to the total number of households

ETM BREAKDOWN BY COO AND GENDER

Country of Origin (ETM)	Female	Male	Total
Eritrea	32	99	131
Somalia	10	18	28
Sudan	9	83	92
Nigeria	1	1	2
Ethiopia	2	2	4
Total	54	203	257

**Total number of Burundians is the individually registered plus the group registered (50907 + 1272 = 52179)

There are 692 Rwandan dependents of registered refugees. They are not included in the above breakdowns.

For More Information: <https://data2.unhcr.org/en/country/rwa/>

Contact: rwakireg@unhcr.org

* ETM : Emergency Transit Mechanism