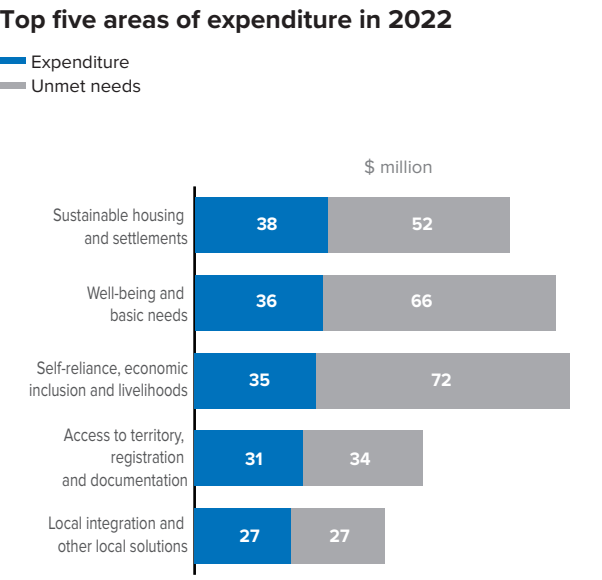
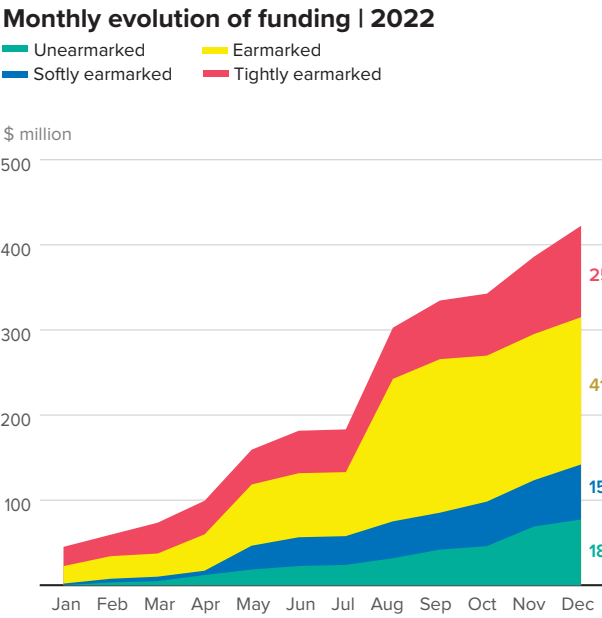
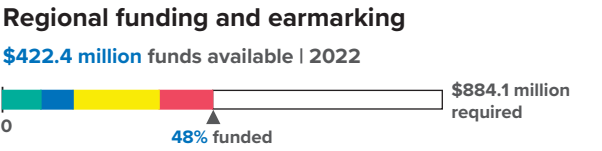
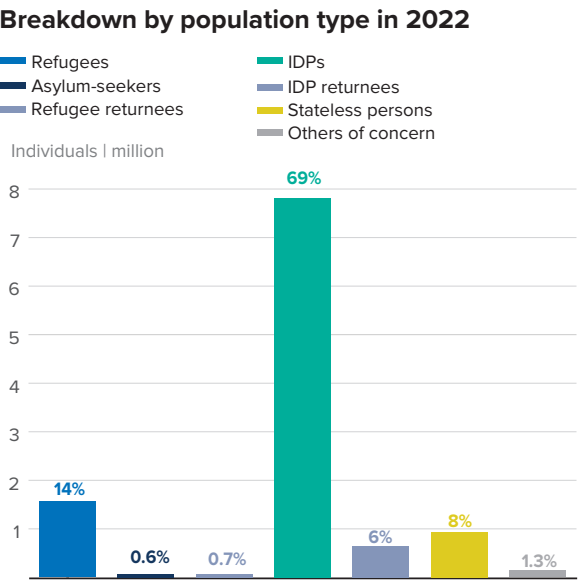
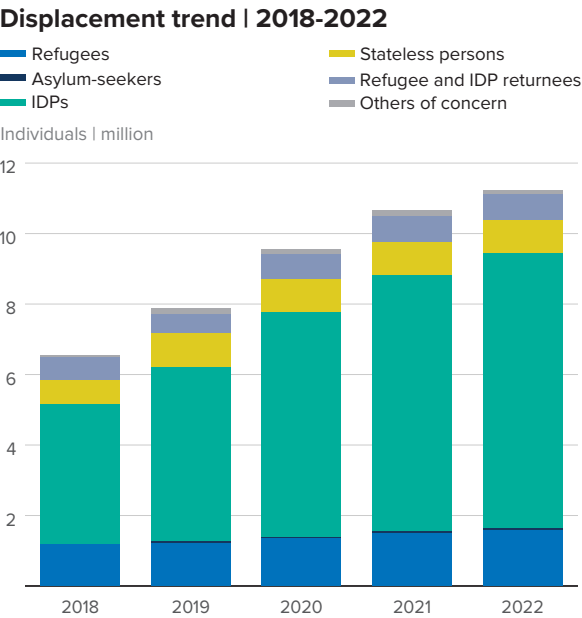
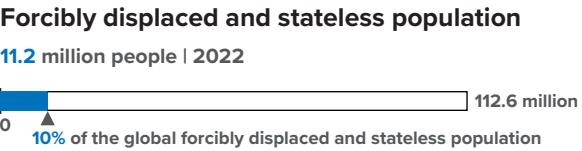
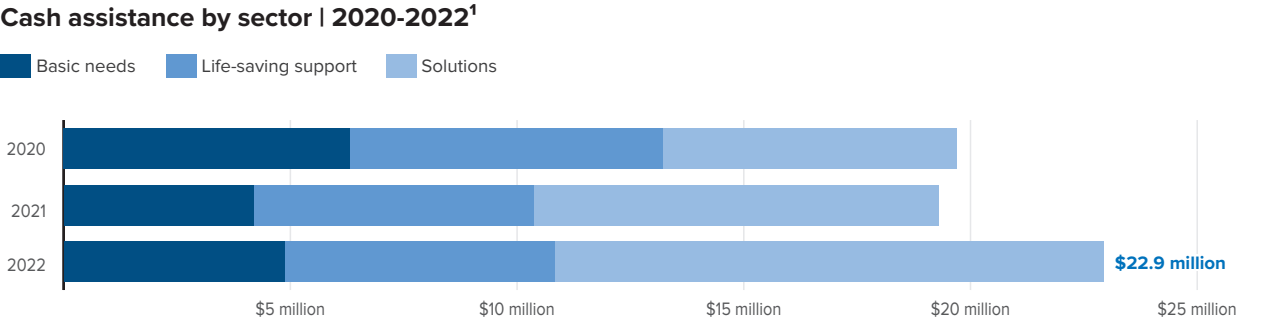


POPULATION AND FUNDING OVERVIEW

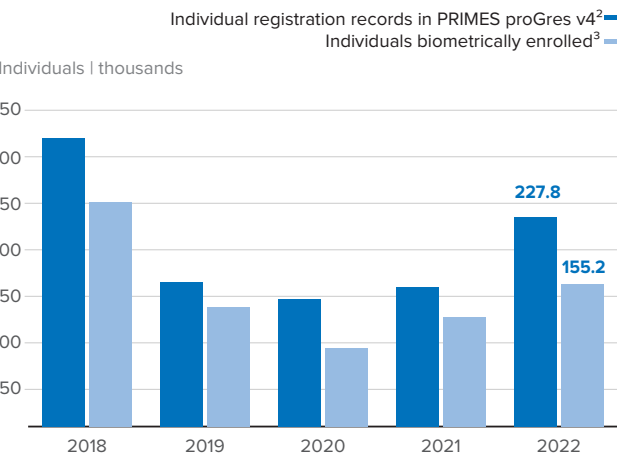


TRENDS IN RESPONSE

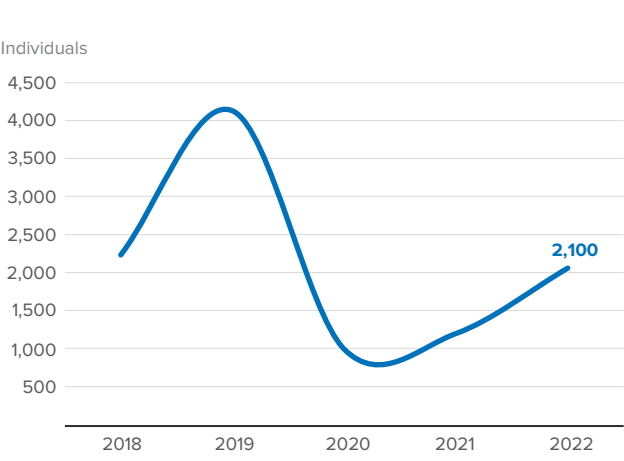


¹Disaggregated cash data for the three African regions is available from 2020.

New individual registration records | 2018-2022



Resettlement departures | 2018-2022



² Including all forcibly displaced and stateless people registered in 2022 as "active", "hold", "inactive", or "closed".
³ The expansion of BIMS in some regions led to an increase in individuals enrolled.

MULTI-SECTOR MONITORING RESULTS

Basic needs

221,100 forcibly displaced and stateless people received cash assistance

• 2021 result: 208,000

Accountability to affected populations

100% of countries had a multi-channel feedback and response system that was designed based on consultations with forcibly displaced and stateless people

Nutrition

25,500 children 6-59 months admitted for treatment of moderate acute malnutrition (MAM)

17,500 children 6-59 months admitted for treatment of severe acute malnutrition (SAM)

Health

1.4 million forcibly displaced and stateless people received essential healthcare services

• 2021 result: 452,000

154,600 women and girls received sexual and reproductive health services (ante- or post-natal care, delivery, contraceptive or gender-based violence clinical services)

• 2021 result: 85,300

30,700 forcibly displaced and stateless people received mental health and psychosocial support services

For more detailed information on UNHCR’s response please visit [Global Focus](#)