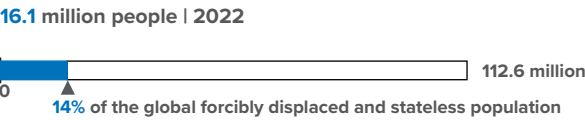
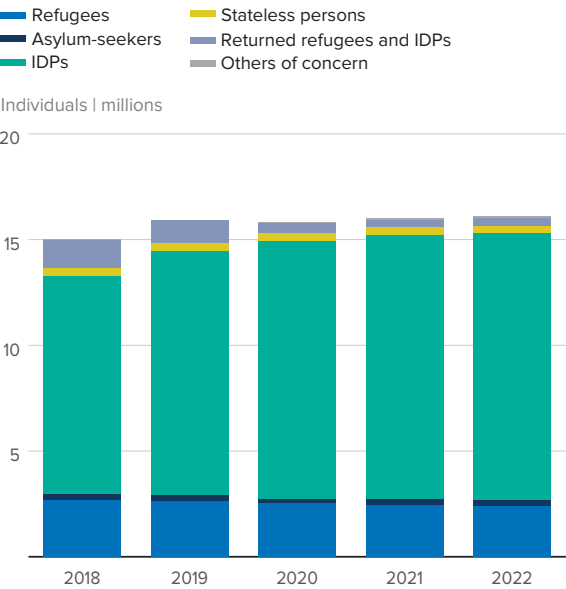


POPULATION AND FUNDING OVERVIEW

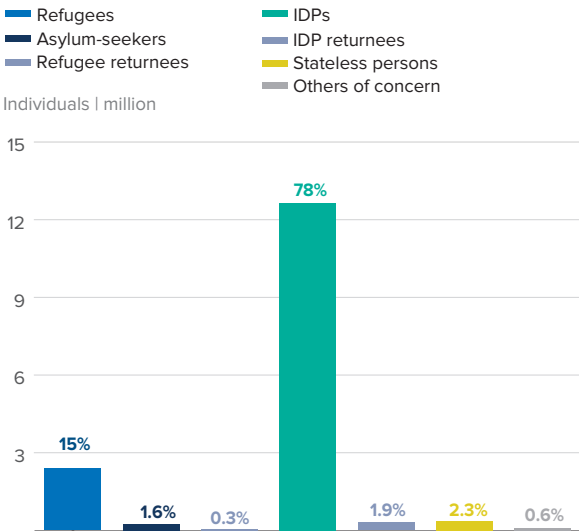
Forcibly displaced and stateless population



Displacement trend | 2018-2022



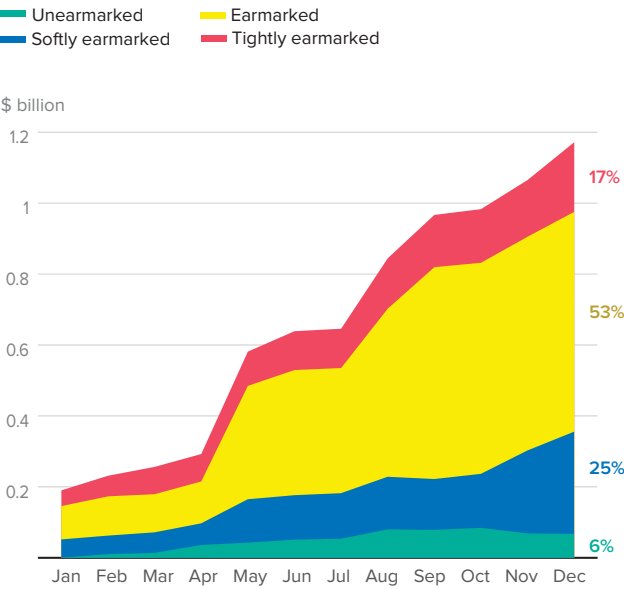
Breakdown by population type in 2022



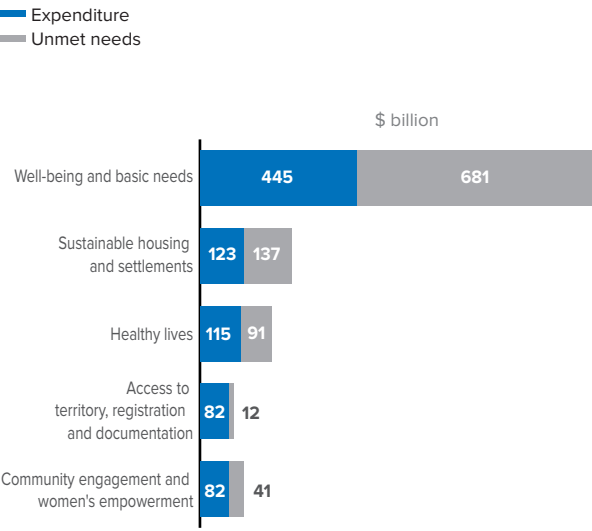
Regional funding and earmarking



Monthly evolution of funding | 2022

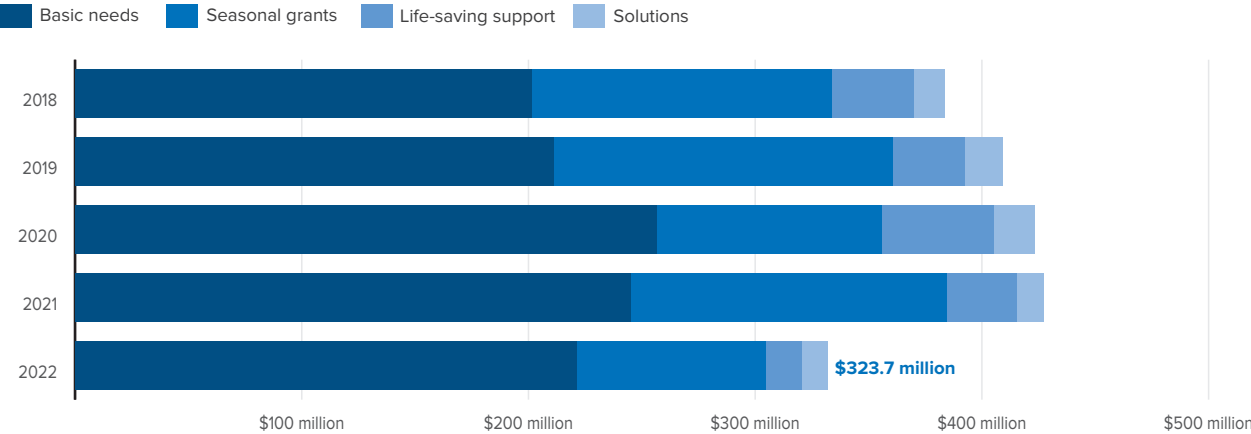


Top five areas of expenditure in 2022



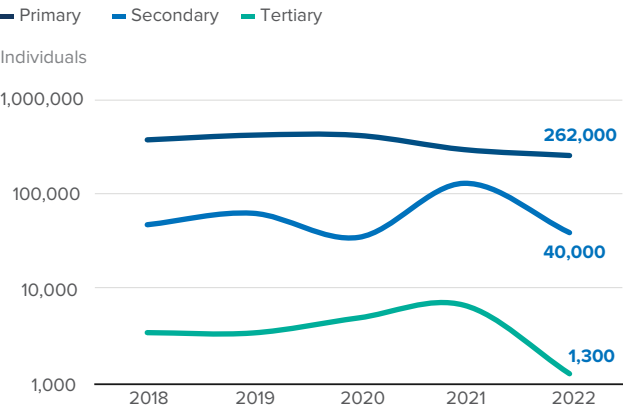
TRENDS IN RESPONSE

Cash assistance by sector | 2018-2022<sup>1</sup>

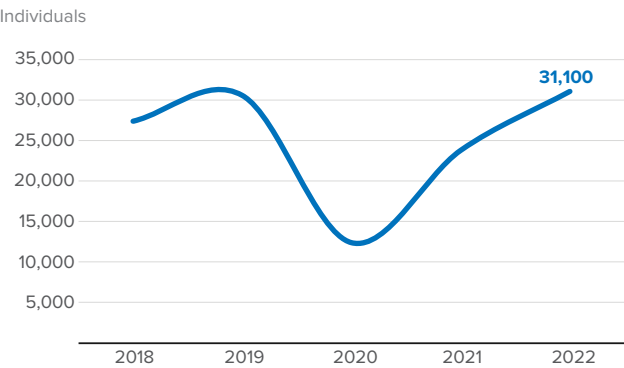


<sup>1</sup> Figures include cash assistance in Türkiye related to the Syria and Iraq situations.

Education enrolment | 2018-2022



Resettlement departures | 2018-2022<sup>2</sup>



<sup>2</sup> Resettlement figures include departures from Türkiye.

MULTI-SECTOR MONITORING RESULTS

**Protection**

4.0 million forcibly displaced and stateless people accessed protection services

2021 result: 5.9 million

1.2 million forcibly displaced and stateless children accessed protection services

**Basic needs**

4.5 million forcibly displaced and stateless people received cash assistance

2021 result: 6.2 million

**Nutrition**

4,600 children 6-59 months admitted for treatment of moderate acute malnutrition (MAM)

2,000 children 6-59 months admitted for treatment of severe acute malnutrition (SAM)

**Health**

2.2 million forcibly displaced and stateless people received essential healthcare services

2021 result: 1.2 million

69,800 women and girls received sexual and reproductive health services (ante- or post-natal care, delivery, contraceptive or gender-based violence clinical services)

2021 result: 60,200

138,300 forcibly displaced and stateless people received mental health and psychosocial support services

For more detailed information on UNHCR's response please visit [Global Focus](#)