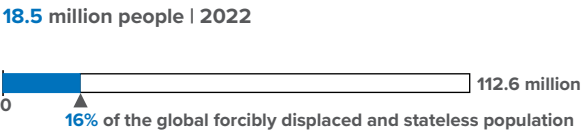
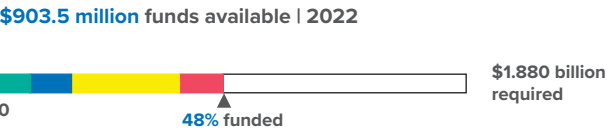


POPULATION AND FUNDING OVERVIEW

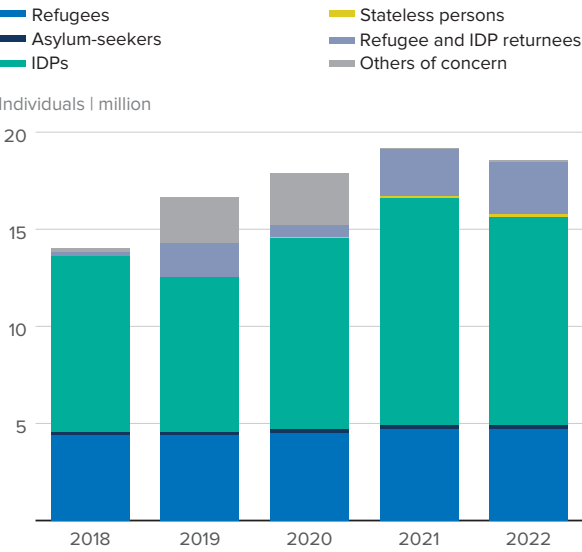
Forcibly displaced and stateless population



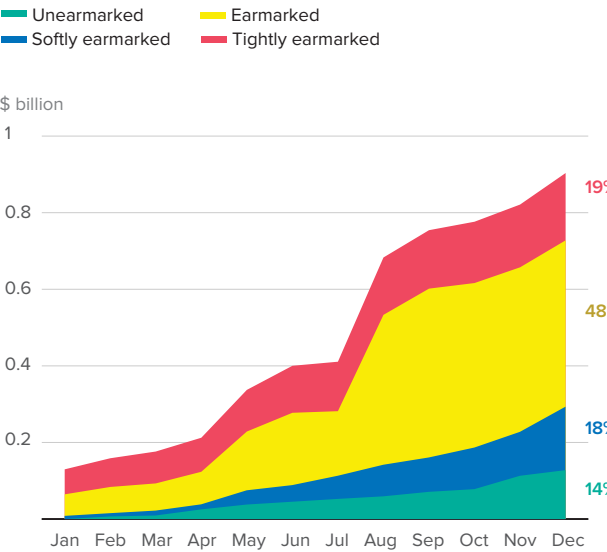
Regional funding and earmarking



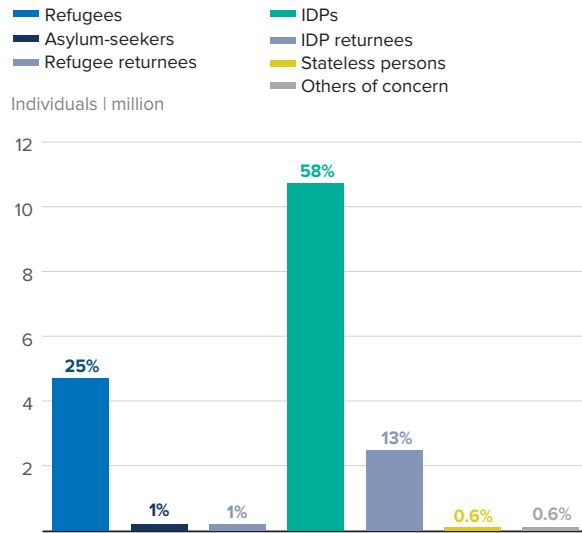
Displacement trend | 2018-2022



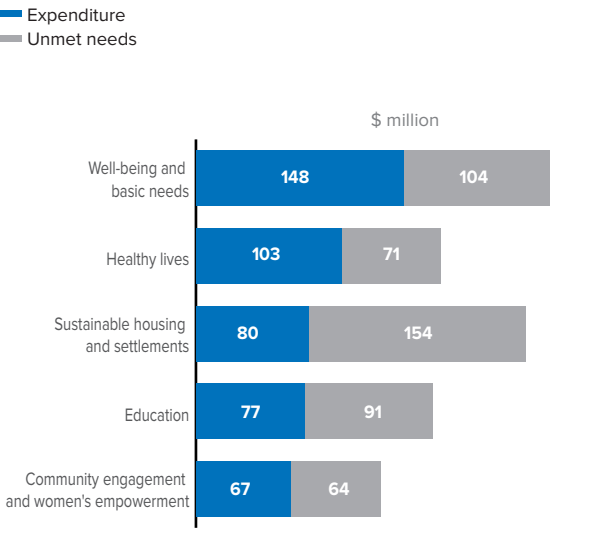
Monthly evolution of funding | 2022



Breakdown by population type in 2022

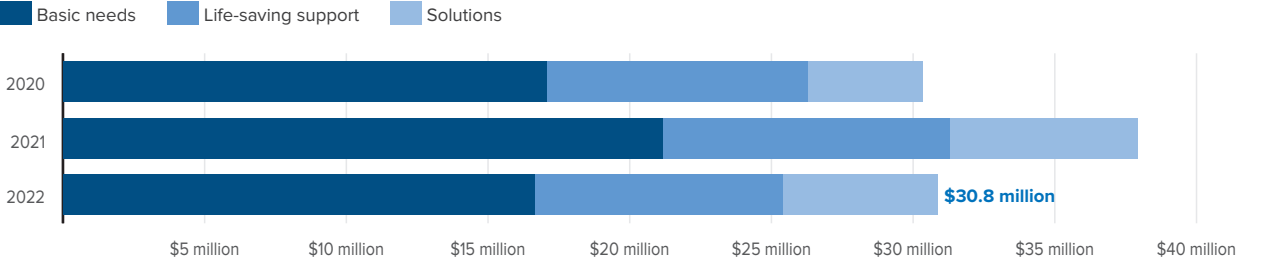


Top five areas of expenditure in 2022



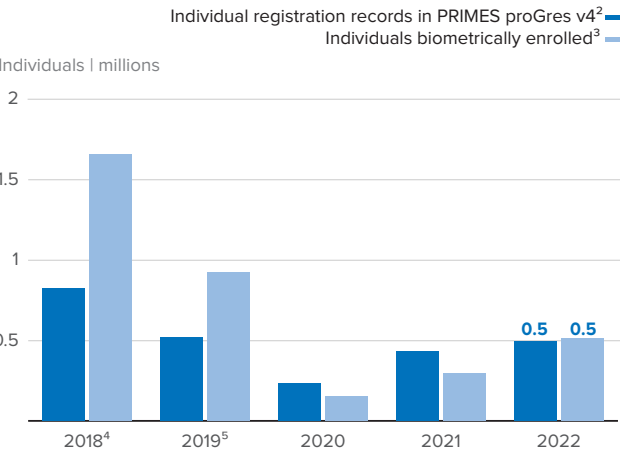
TRENDS IN RESPONSE

Cash assistance by sector | 2020-2022¹

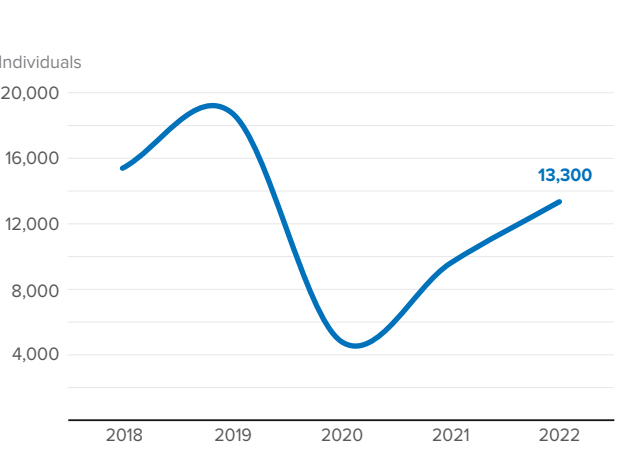


¹ Disaggregated cash data for the three African regions is available from 2020.

New individual registration records | 2018-2022



Resettlement departures | 2018-2022



² Including all forcibly displaced and stateless people registered in 2022 as "active", "hold", "inactive", or "closed".
³ The expansion of BIMS in some regions led to an increase in individuals enrolled.
^{4&5} The difference between individuals biometrically enrolled and individuals registered in PRIMES proGres v4 is due to imported data - stock data and flow data respectively.

MULTI-SECTOR MONITORING RESULTS

Protection

7.1 million forcibly displaced and stateless people accessed protection services

• 2021 result: 3.4 million

3.3 million forcibly displaced and stateless children accessed protection services

Basic needs

1.2 million forcibly displaced and stateless people received cash assistance

• 2021 result: 1.0 million

Accountability to affected populations

64% of countries had a multi-channel feedback and response system that was designed based on consultations with forcibly displaced and stateless people

Nutrition

88,900 children 6-59 months admitted for treatment of moderate acute malnutrition (MAM)

46,900 children 6-59 months admitted for treatment of severe acute malnutrition (SAM)

Health

4.8 million forcibly displaced and stateless people received essential healthcare services

• 2021 result: 5.62 million

477,700 women and girls received sexual and reproductive health services (ante- or post-natal care, delivery, contraceptive or gender-based violence clinical services)

• 2021 result: 741,500

117,900 forcibly displaced and stateless people received mental health and psychosocial support services

For more detailed information on UNHCR's response please visit [Global Focus](#)