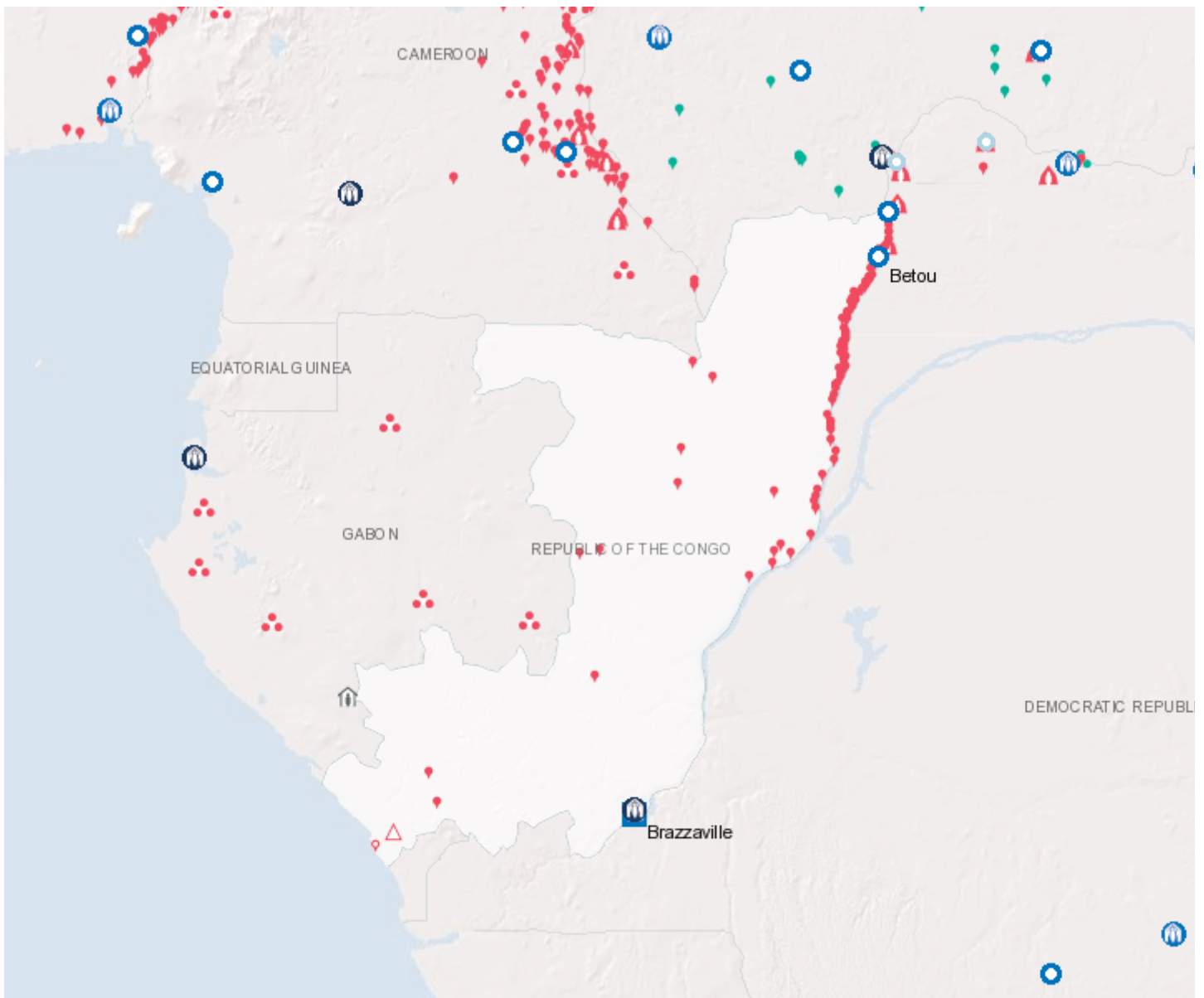


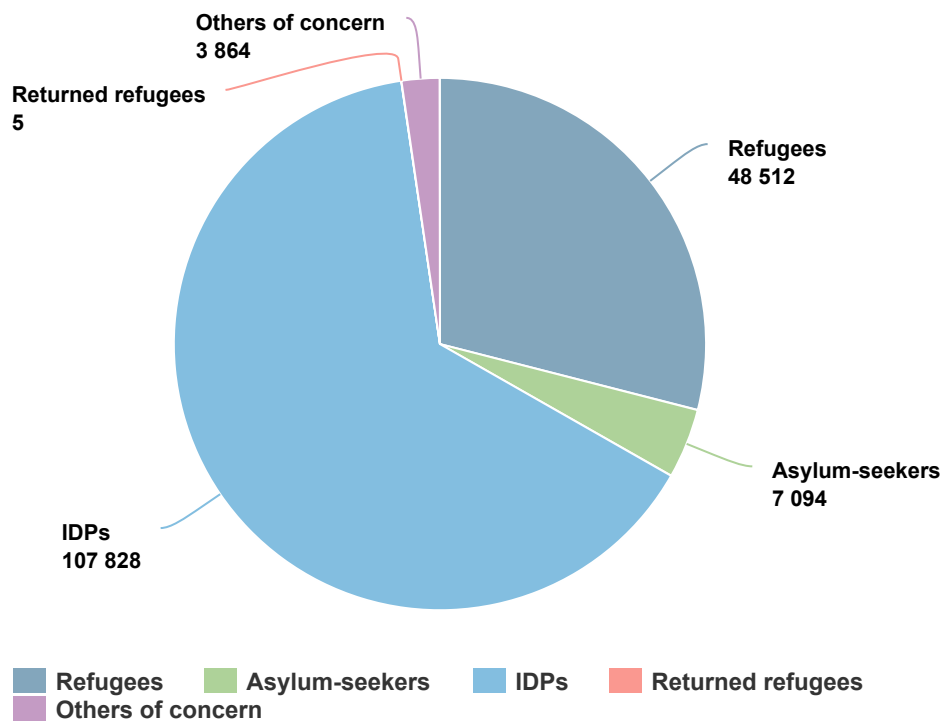
Operation: Congo



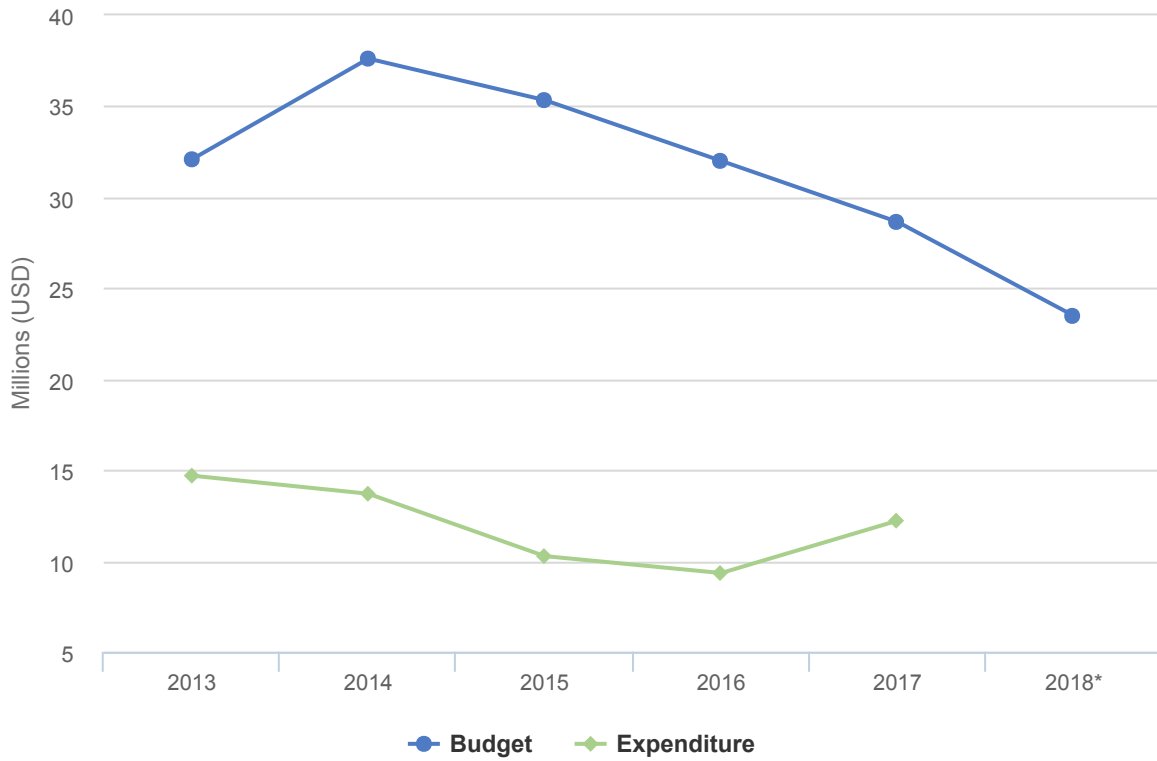
People of Concern

INCREASE IN
134% 2017

2017	167,303
2016	71,598
2015	52,152



Budgets and Expenditure for Congo



Operational context

The economy in the Republic of the Congo suffered from consequences of the oil price drop, unsustainable debt, and from weak governance. Following President Denis Sassou Nguesso re-election in March 2016, his government quickly called for unity, dialogue and national cohesion. Despite development efforts, the state of health and education systems continued to deteriorate, with a high negative impact on refugees and other vulnerable people.

Police harassment and extortion remained as the main protection issues faced by refugees but improvements were made due to training and sensitisation of police officials.

More than 15,000 children, including refugees, were without birth certificates. However, the Republic of Congo hosted the International Conference on the Great Lakes Region (ICGLR) in October 2017 that adopted a ministerial declaration and plan of action on the eradication of statelessness. UNHCR is planning to further build on this opportunity with activities regarding the eradication of statelessness in 2018.

There was no improvement to the violence and insecurity in the Pool a department in the southern part of the country, and this triggered the launch of a Humanitarian Response Plan in July 2017, targeting some 138,000 IDPs and host communities.

Population trends

As of end 2017 there were close to 167,300 people of concern to UNHCR including some 107,800 IDPs, more than 48,500 refugees, close to 7,100 asylum-seekers and 3,900 others of concern. This was an increase of 133 per cent when compared to 2016, when the number of people of concern stood at some 71,600 people.

Key achievements

- On 21 November 2017 UNHCR and the Government of the Republic of Congo signed Memorandum of Understanding, which aims at strengthening the Government's capacities in emergency preparedness and humanitarian action.
- The operation raised funding from China for assisting 20,000 IDPs in accessing adequate and dignified housing and shelter, and other 50,000 IDPs to have adequate non-food items.
- 100 per cent of people of concern were registered on an individual basis.
- The cessation clause for Rwandans was prepared and is due to come effect on 1 January 2018. A total of 804 refugees were exempted, and the 8,400 who were not exempted will be considered as 'others of concern' to UNHCR as of January 2018.
- A total of 85 shelters were built in fired clay brick in refugee settlements of 15 Avril (Betou) and Ikpemgebe.

Unmet needs

- Only 33.3 per cent of households had their own latrines, far off from UNHCR's standard of 85 per cent at the post-emergency stage.
- There was a need to renew deteriorated items of about 6,500 families.
- More than 300 shelters, about 20 community kitchens and almost all shelter roofs require major rehabilitation.
- UNHCR's programmes in the Republic of the Congo continue to be poorly financed. In 2017 funding level stood at 25 per cent, and therefore refugees were becoming increasingly vulnerable.

2017 Expenditure for Congo | USD

The following table presents the final budget and funds available by pillar and the final expenditure at the objective-level, as reported at year-end.

	Pillar 1 Refugee programme	Pillar 4 IDP projects	Total
Final Budget	26,232,864	2,409,803	28,642,667
Income from contributions*	3,207,245	1,000,001	4,207,246
Other funds available / transfers	6,627,389	1,446,213	8,073,602
Total funds available	9,834,634	2,446,214	12,280,848
Expenditure by Objective			
Fair Protection Processes and Documentation			
Registration and profiling	89,572	0	89,572
Status determination	220,299	0	220,299
Individual documentation	280,182	0	280,182
Civil status documentation	89,310	0	89,310
Subtotal	679,363	0	679,363
Security from Violence and Exploitation			
SGBV prevention and response	455,632	0	455,632
Child protection	192,813	0	192,813
Subtotal	648,444	0	648,444
Basic Needs and Essential Services			
Health	2,359,534	0	2,359,534
Nutrition	119,240	0	119,240
Water	244,216	0	244,216
Sanitation and hygiene	104,435	0	104,435
Shelter and infrastructure	0	1,029,229	1,029,229
Basic and domestic and hygiene Items	217,209	1,346,126	1,563,335
Services for persons with specific needs	869,325	0	869,325
Education	897,801	0	897,801
Subtotal	4,811,760	2,375,355	7,187,114
Community Empowerment and Self Reliance			
Self-reliance and livelihoods	459,919	0	459,919
Subtotal	459,919	0	459,919
Durable Solutions			
Voluntary return	352,029	0	352,029
Integration	196,428	0	196,428

	Pillar 1 Refugee programme	Pillar 4 IDP projects	Total
Resettlement	208,035	0	208,035
Subtotal	756,492	0	756,492
Logistics and Operations Support			
Supply chain and logistics	679,114	0	679,114
Operations management, coordination and support	1,798,516	1,992	1,800,508
Subtotal	2,477,630	1,992	2,479,623
Headquarters and Regional Support			
Global strategic direction and management	228	0	228
Global supply management	799	0	799
Subtotal	1,026	0	1,026
2017 Expenditure Total	9,834,634	2,377,347	12,211,982

**Income from contributions includes indirect support costs that are recovered from contributions to Pillars 3 and 4, supplementary budgets and the "New or additional activities – mandate-related" (NAM) Reserve. Contributions towards all pillars are included under Pillar 1.*