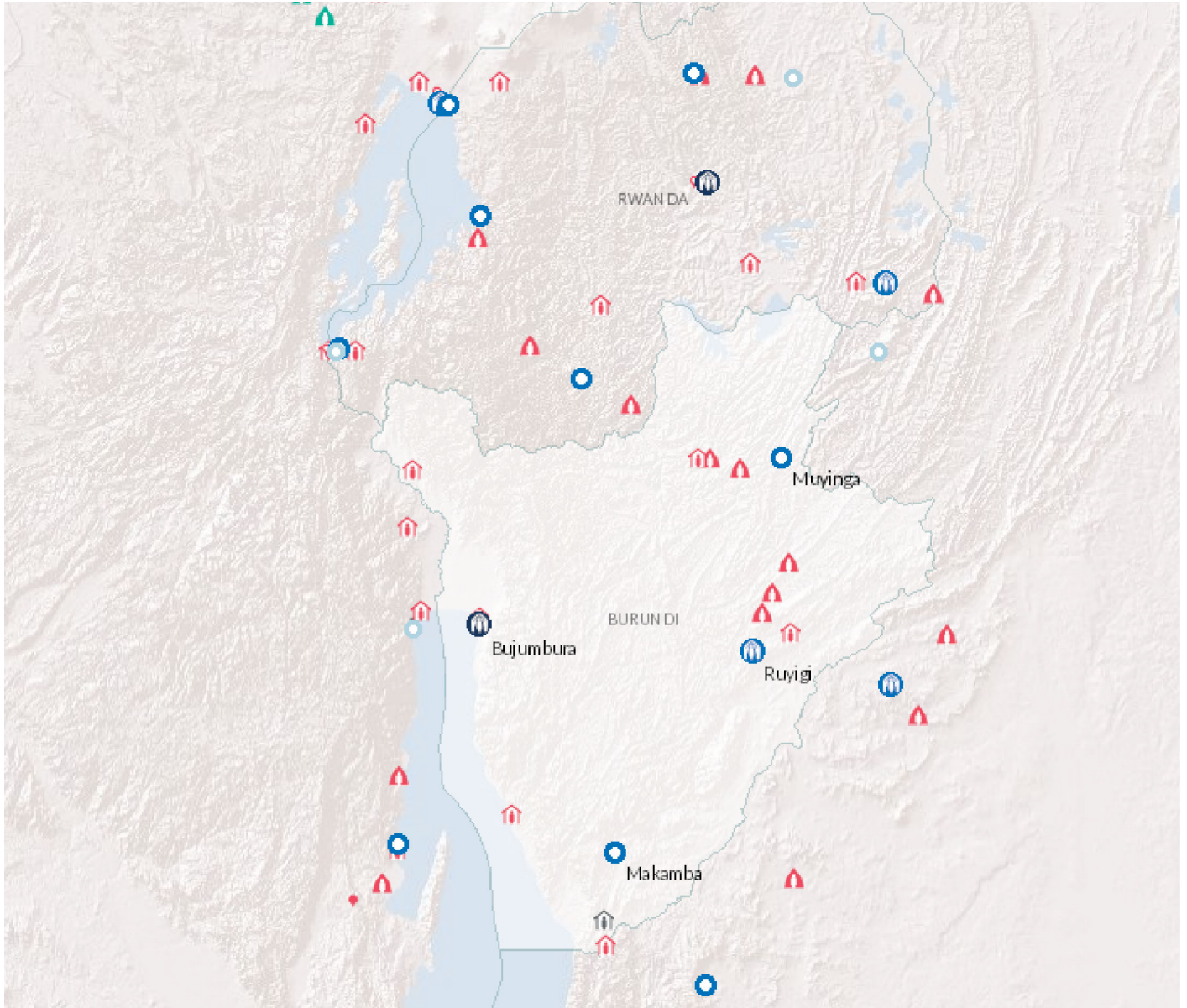




## 2020 Planning summary

21/11/2019

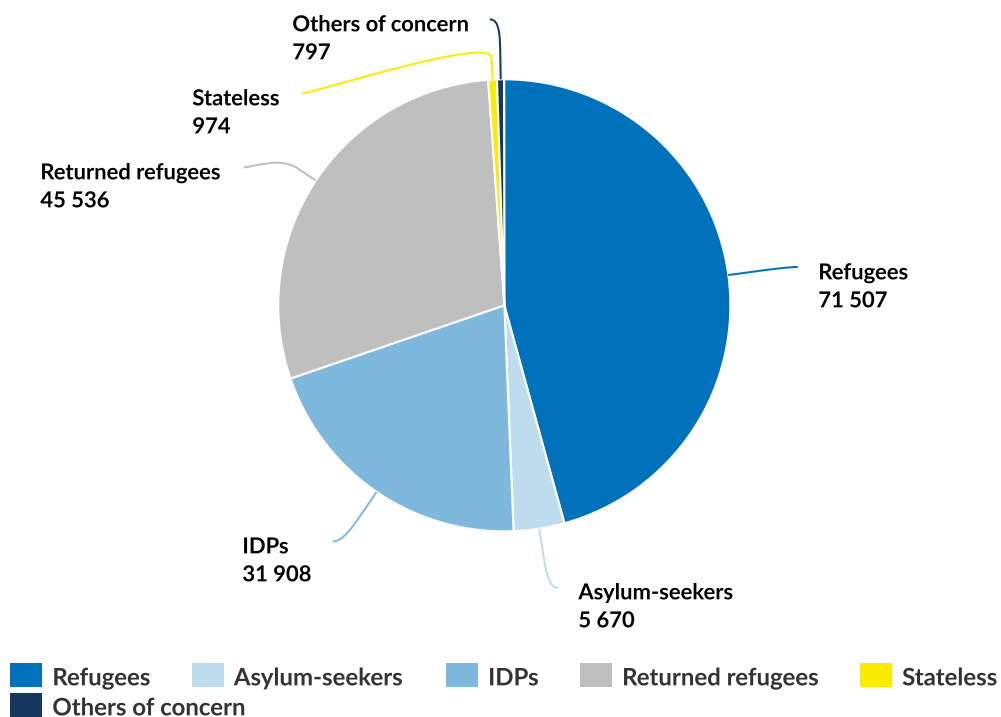
### Operation: Burundi



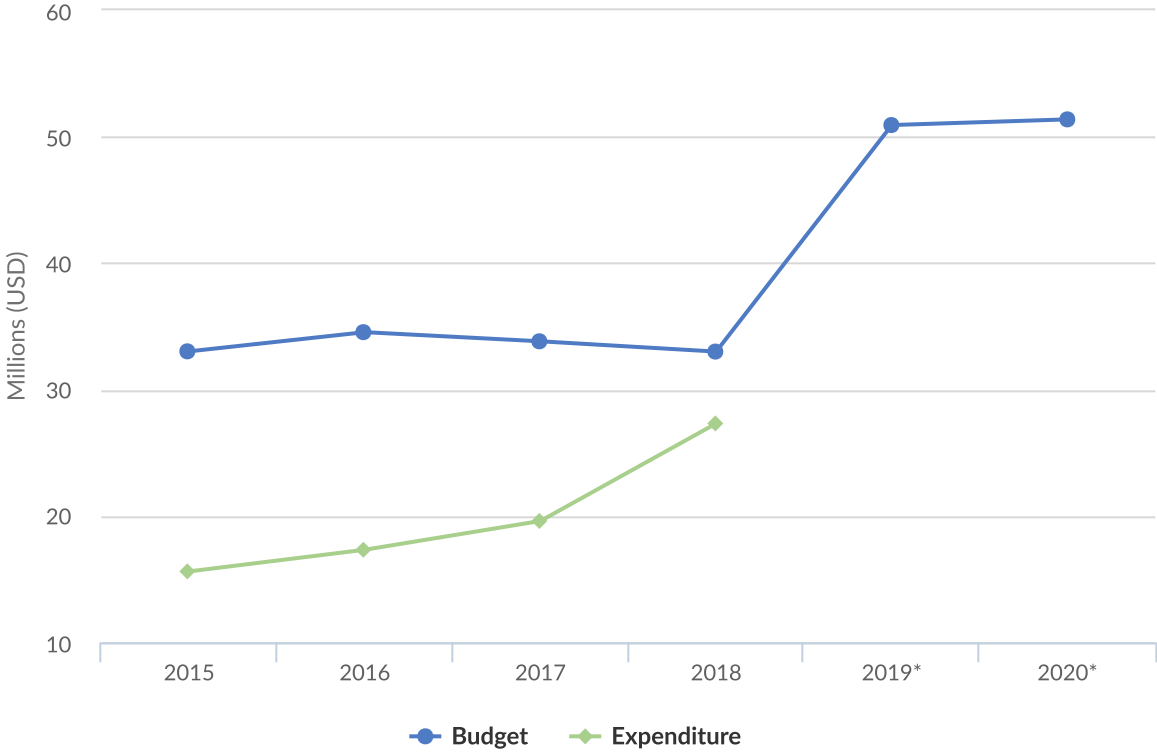
# People of Concern

DECREASE IN  
**20%** 2018

2018	156,392
2017	195,530
2016	208,049



# Budgets and Expenditure for Burundi



## Working environment

Ahead of the 2020 elections, the political and working environments in Burundi remain complex. There are reports of tension between the Government and the opposition parties, along with human rights violations. Socio-economic conditions remain dire.

Despite the challenging environment, the Burundian government maintains an open-door policy towards refugees and asylum-seekers. New arrivals, mainly from the DRC, are received regularly. Refugees can access basic social services, such as health and education, but lack sufficient resources to cover their needs, even with UNHCR's support. Work opportunities are limited, meaning most refugees are reliant on humanitarian assistance.

While UNHCR is not promoting the return of Burundian refugees, it will assist those who opt to return voluntarily. It has encouraged development actors to invest in key return areas, helping with reintegration. While more than 75,000 Burundian refugees have returned, fewer are expected in 2020 due to pre-election concerns and unfavourable living conditions.

The Burundi Government provides land and water access to five refugee camps and eight transit facilities. In addition, civil documentation is provided free of charge to people of concern.

UNHCR works closely with the UN country team on humanitarian response, leading the protection working group and co-leading the shelter and non-food items working group with IOM. UNHCR works in the framework of the Regional Refugee Response Plans, including the plan for the Congolese situation.

Together with UNDP and other UN agencies, UNHCR coordinated the Joint Refugee Return and Reintegration Plan, which highlights the need to invest in basic services in return areas. UNHCR has been part of the UNDAF 2019-2023 and has ensured that refugees are mainstreamed into all initiatives aimed at strengthening the resilience of vulnerable populations, in line with the Global Compact on Refugees.

The operation will intensify its external engagement efforts and develop relations with local donors, including development institutions.

## Key priorities

In 2020, UNHCR will:

- Provide protection and assistance, including basic services, to people of concern, including pursuing durable solutions.
- Preserve the civilian and humanitarian character of asylum, and ensure respect for the principle of non-refoulement.
- Develop empowerment and resilience-building initiatives, including support for livelihoods;
- Support voluntary repatriation of Burundian refugees to ensure their safe and dignified return and their inclusion in sustainable reintegration initiatives.

(<http://reporting.unhcr.org/node/24637/edit>)

---