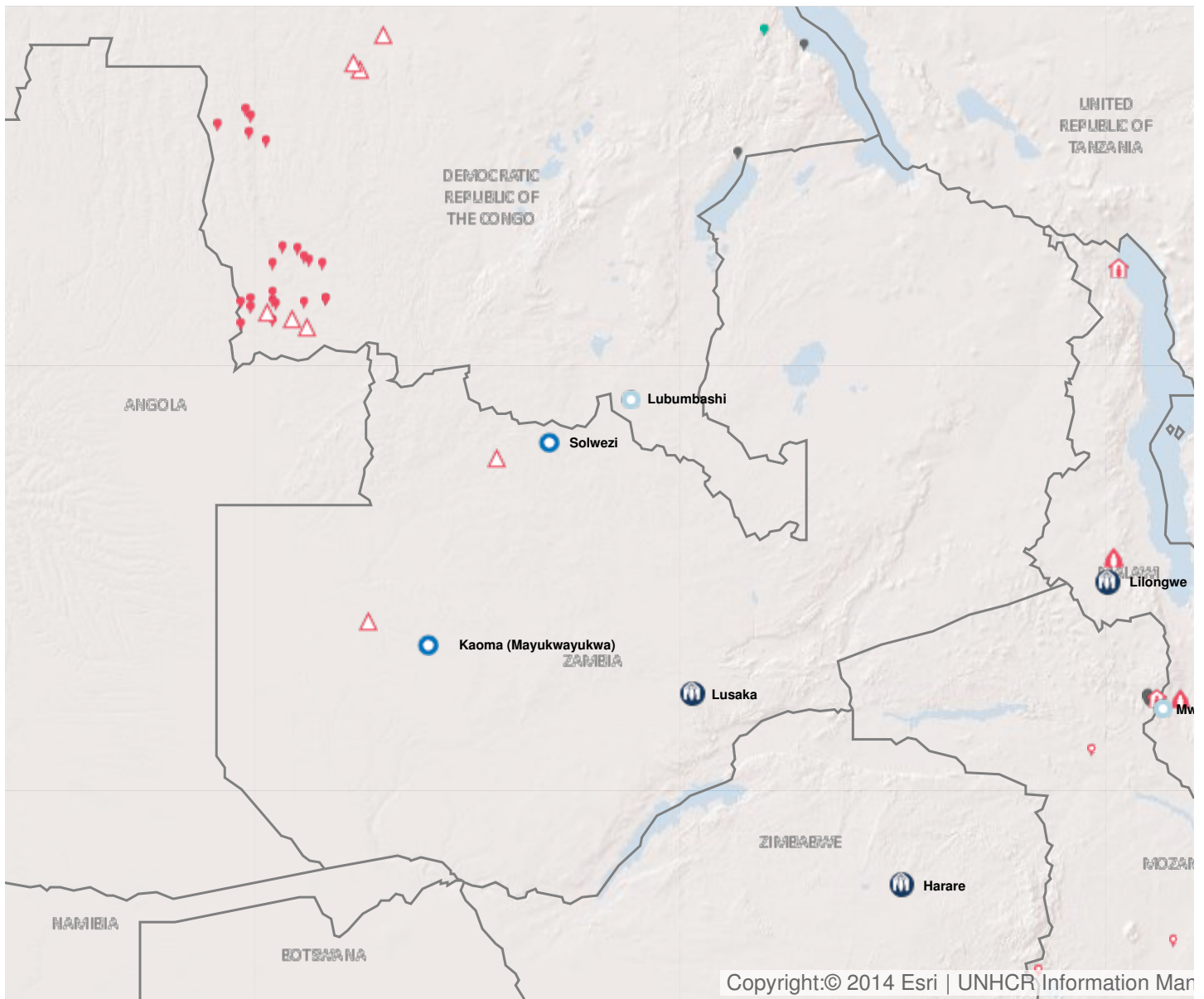


## Operation: Zambia

### Location

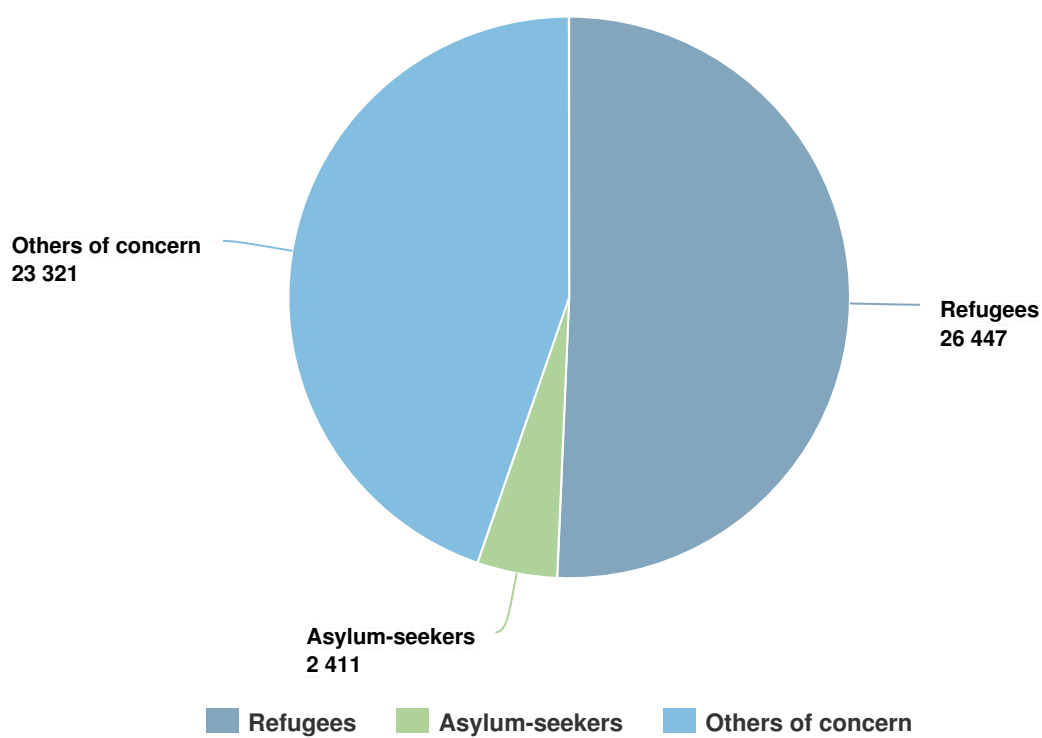


Latest update of camps and office locations **21 Nov 2016**. By clicking on the icons on the map, additional information is displayed.

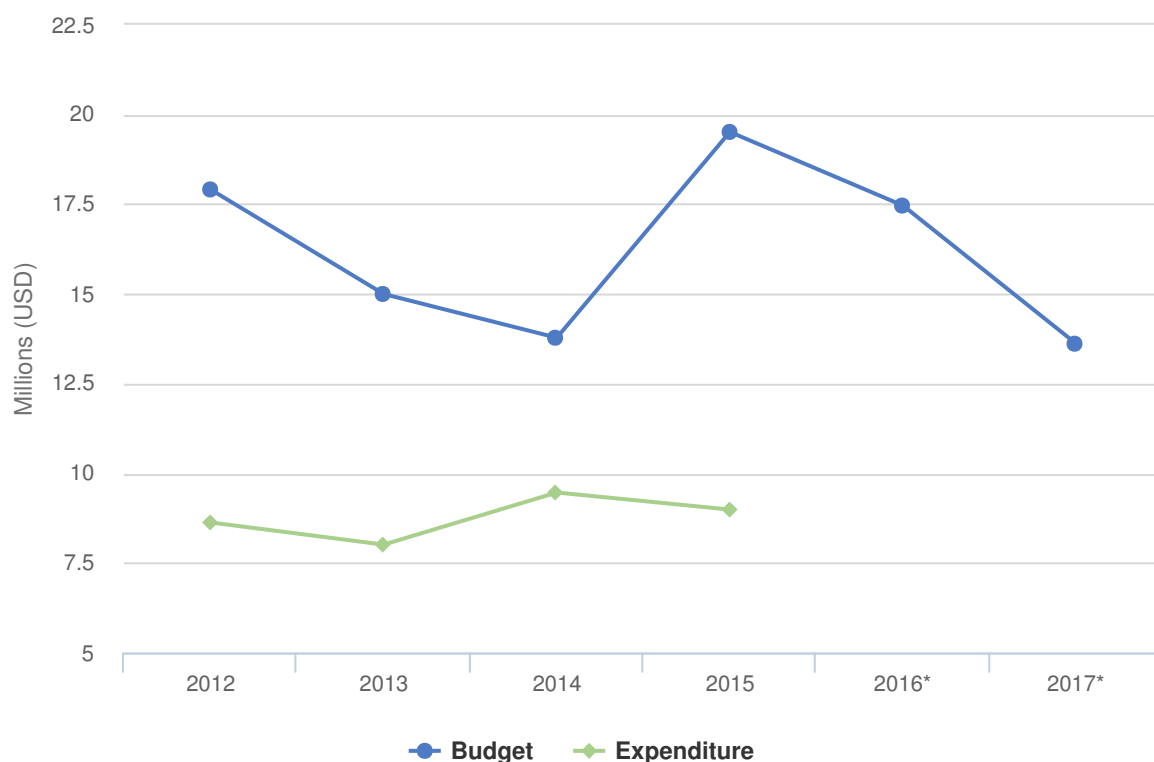
# People of Concern

INCREASE IN  
**4%** **2015**

<b>2015</b>	52,179
<b>2014</b>	50,216
<b>2013</b>	53,019



# Budgets and Expenditure for Zambia



## Working environment

Zambia has a long history of providing land, security and access to public primary health and education services to refugees. Nevertheless, the current encampment policy forces large numbers of refugees to relocate irregularly to urban areas in search of economic opportunities, putting them at risk of exploitation and detention.

Funding shortages will negatively impact on access to education and secondary health care, as well as the targeted assistance to vulnerable refugees and asylum-seekers. The implementation of the mixed migration strategies, as well as the pilot detention strategy will also be affected.

## Key priorities

In 2017 the UNHCR operation in Zambia will focus on:

- pursuing legal aspects of the local integration of former Angolan and Rwandan refugees;
- advocating to extend local integration to protracted Congolese and Burundian refugees;
- pursuing resettlement to a third country for some 1,300 refugees with special protection needs;
- strengthening child protection activities by enhancing the capacity of partners to conduct best interest determination and to identify solutions for unaccompanied and separated children;
- further exploring and implementing alternatives to detention;
- continuing the prevention of SGBV through community sensitization;
- supporting the Government to fulfil its pledge to accede to the 1961 Statelessness Convention.