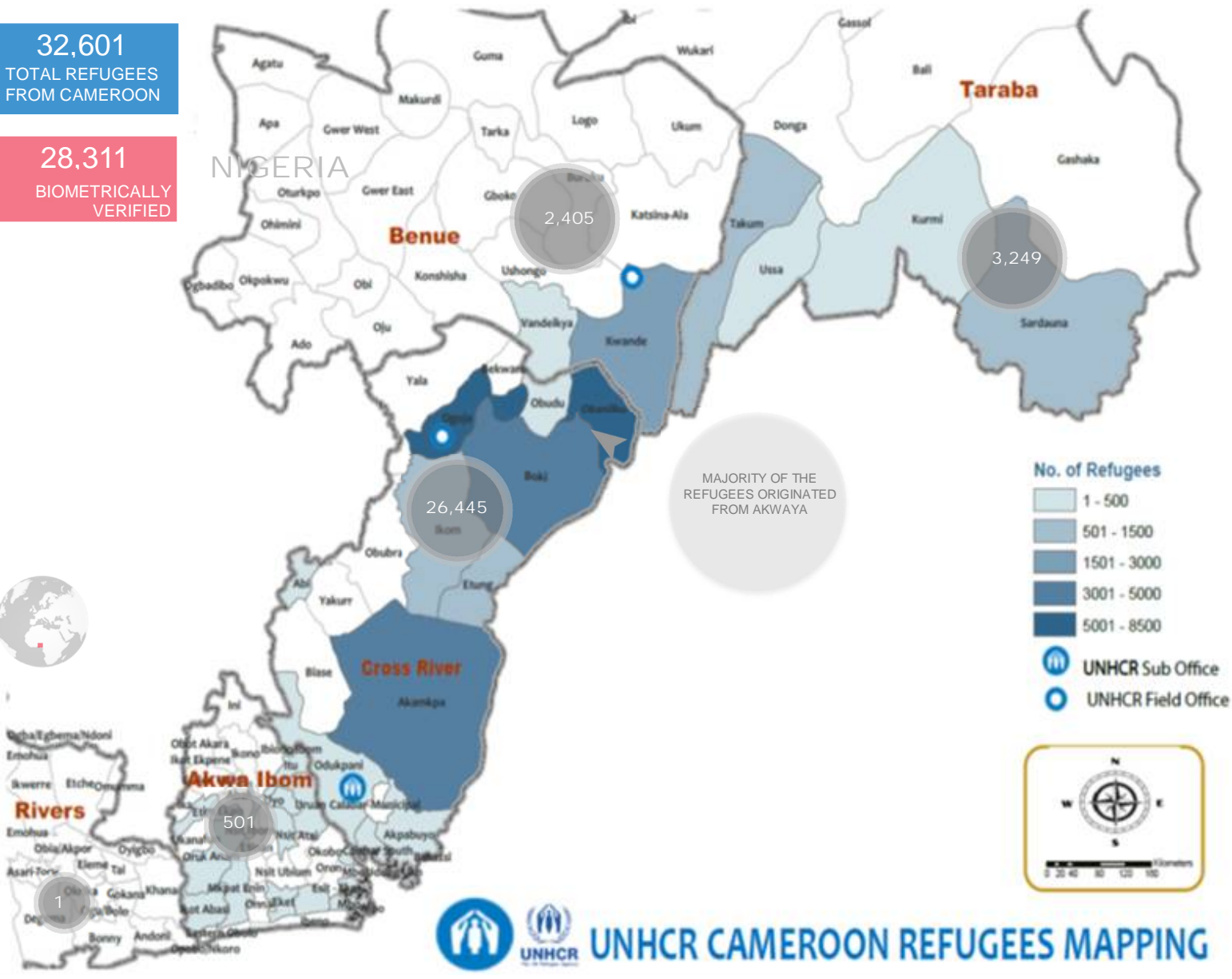


32,601
TOTAL REFUGEES
FROM CAMEROON

28,311
BIOMETRICALLY
VERIFIED

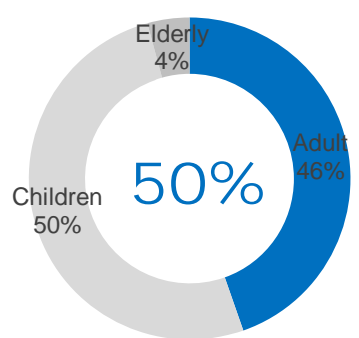


BIOMETRICALLY VERIFIED



87% (28,311 individuals) of the total refugees counted at household level has been registered/verified through biometric capture of iris, fingerprints (10) and photo. Refugee information were also validated through amendment of their existing information, litigation and support of national documentations. Provision of Refugee ID cards will ensure that credible information will effectively and efficiently provide protection to refugees.

REGISTERED REFUGEES PER AGE CATEGORY

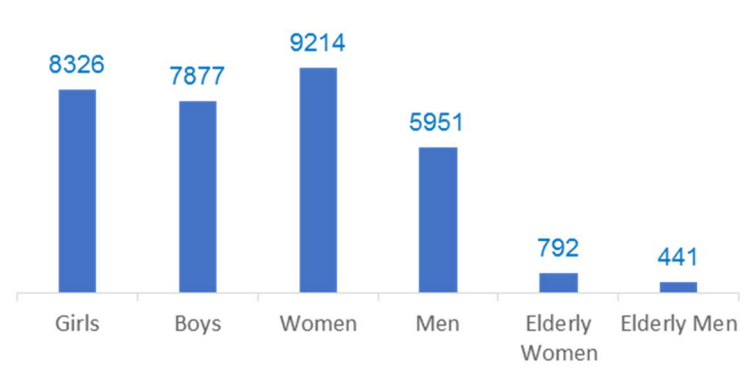


50% of registered Cameroonian refugees are under the age of 18

REGISTERED REFUGEES PER MONTH



REGISTERED REFUGEES PER DEMOGRAPHICS



BREAKDOWN BY LOCATION, GENDER AND AGE COHORT

STATE	LGAs	0-4		0-4 Total	5-11		5-11 Total	12-17		12-17 Total	18-59		18-59 Total	60 and above		60 and above Total	Grand Total
		F	M		F	M		F	M		F	M		F	M		
Akwa Ibom	Eket				1		1				4	2	6				7
	Esit Eket	5	5	10	7	5	12	5	5	10	19	6	25				57
	Etim Ekpo		2	2	2	1	3				2		2				7
	Ibesikpo Asutan										1	1	2				2
	Ikot Abasi		1	1	1		1		1	1	4	1	5	1		1	9
	Itu	1		1	1	1	2				1	2	3				6
	Mbo	1	2	3	4	1	5	1	3	4	4	2	6				18
	Mkpat Enin	2	4	6	3	3	6		1	1	20	7	27	5	1	6	46
	Oron	17	20	37	13	27	40	22	15	37	72	35	107	3		3	224
	Oruk Anam											1	1				1
Uruan		1	1					4	4	3	5	8				13	
Uyo	10	10	20	4	9	13	5	5	10	36	30	66		2	2	111	
Benue	Kwande	242	253	495	344	350	694	170	107	277	552	303	855	49	33	82	2403
	Vandikya									1	1	2				2	
Cross River	Abi		1	1				1	1								2
	Akamkpa	291	317	608	327	348	675	226	256	482	1805	1252	3057	175	115	290	5112
	Akpabuyo	2	2	4	5	4	9	1	3	4	14	9	23	1		1	41
	Bakassi	25	15	40	24	27	51	14	20	34	196	126	322	8	4	12	459
	Boki	250	238	488	286	253	539	176	183	359	923	727	1650	96	55	151	3187
	Calabar Sou	8	13	21	18	14	32	10	10	20	60	45	105	5	2	7	185
	Calabar-mu	47	57	104	61	76	137	76	50	126	300	234	534	10	9	19	920
	Etung	98	102	200	139	148	287	88	74	162	337	227	564	23	24	47	1260
	Ikom	93	63	156	97	80	177	66	59	125	323	326	649	19	5	24	1131
	Obanliku	422	409	831	827	711	1538	452	322	774	1532	637	2169	178	58	236	5548
Obudu	1	1	2	1		1		1	1	5	5	10				14	
Ogoja	838	827	1665	1082	1047	2129	607	536	1143	2101	1288	3389	162	98	260	8586	
Rivers	Port-harcourt										1	1				1	
Taraba	Jalingo				1	2	3	2	2	1	2	3				8	
	Kurmi	21	20	41	23	24	47	25	19	44	65	56	121	4	7	11	264
	Sardauna	122	127	249	149	158	307	80	68	148	457	307	764	25	15	40	1508
	Takum	102	109	211	121	120	241	108	91	199	312	284	596	13	8	21	1268
	Ussa	21	14	35	19	19	38	12	3	15	64	29	93	15	5	20	201
Grand Total																	

BREAKDOWN BY OCCUPATION



BREAKDOWN BY EDUCATION

