

## UNHCR SYRIA SITUATION REPORT FOR THE NORTH EAST SYRIA HUMANITARIAN EMERGENCY

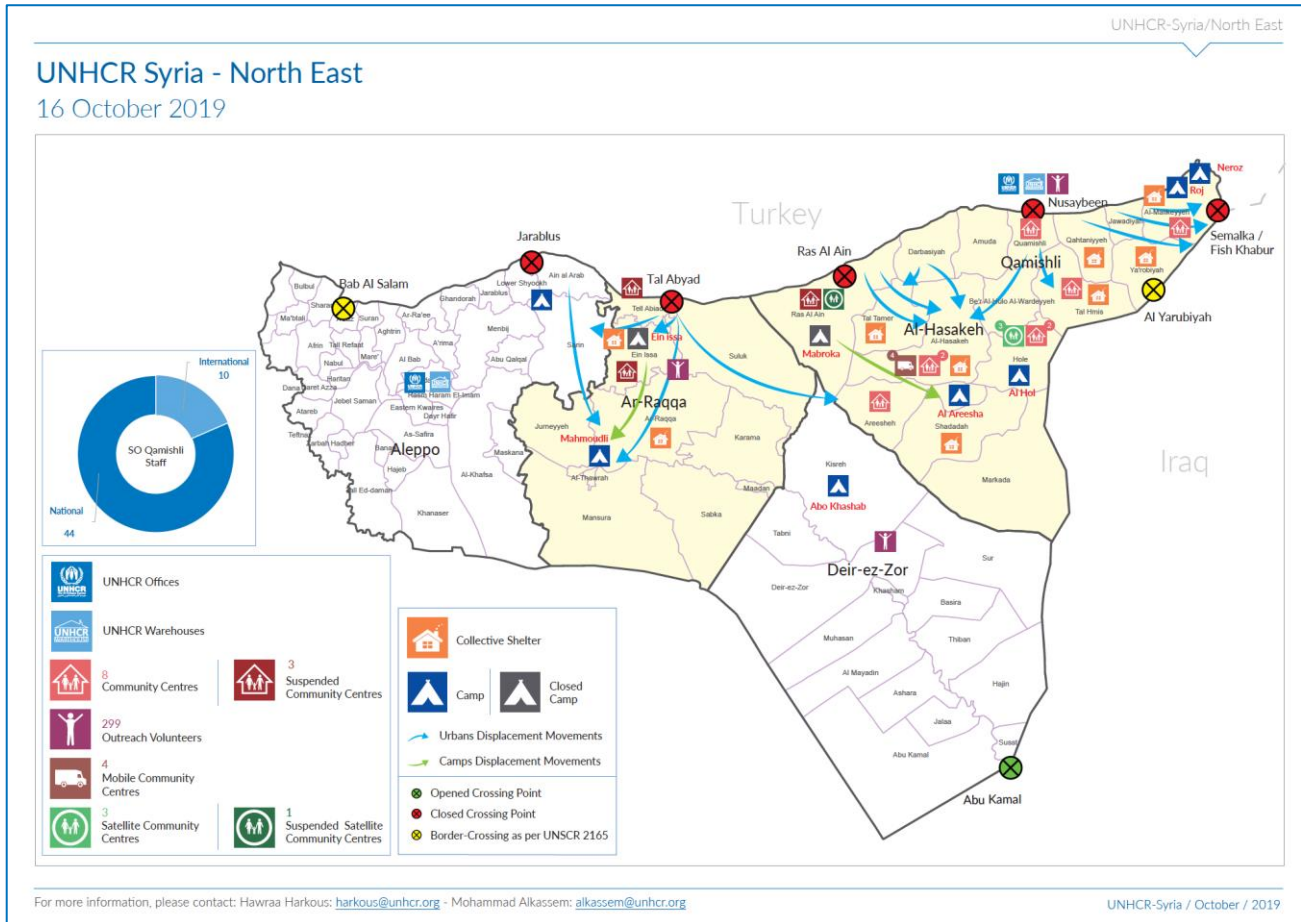
As of 16 October 2019

- Over 160,000 people<sup>1</sup> are reported to have been displaced following the start of military operations in north-east Syria on 9 October, including nearly 70,000 children<sup>2</sup>. There are reports of further displacements and the number is likely to increase.
- According to the scenario of full scale military operations in the UN inter-agency contingency plan, 400,000 civilians may require assistance and protection in the coming period (up from an initial estimate of 100,000 people). To date, most displacements took place from Ras al-Ain (Al-Hassakeh governorate) and Tell Abiad (Ar-Raqqa governorate) on the border with Turkey, with some families being displaced multiple times. The full humanitarian impact of the current military operation remains difficult to ascertain given the volatile situation.
- UNHCR with 54 staff continues to operate out of Qamishly and plans to scale up its operation. UNHCR is responding to the needs of the affected population through the provision of emergency items and community-based protection in camps, collective shelters and host communities. These activities are implemented in close coordination with four of UNHCR's local partners including; Greek Orthodox Patriarchate of Antioch and All the East (GOPA), St. Ephrem Patriarchal Development Committee (EPDC), Syrian Society for Social Development, and Syria Al Yamama Association.
- In partnership with these national NGOs, UNHCR has during this emergency eight operational community centres in Al-Hasakeh, including two in Al-Hol camp, as well as three satellite centres in Al-Hasakeh. These static facilities are also supported by four mobile units in Al-Hasakeh as well as 248 outreach volunteers in Al-Hasakeh and 25 outreach volunteers in Ar-Raqqa and nine in Deir-ez-Zor.

---

<sup>1</sup> According to OCHA

<sup>2</sup> According to UNICEF



## Emergency response update



### Protection concerns and response

- UNHCR and its partners identified immediate protection needs of families including civil documentation, family separation, unaccompanied children, psychological first aid, dignity kits and support to persons with specific needs.
- 20,000 individuals/5,000 families are reportedly in Hassakeh, many being accommodated by the host communities. Assessments, referrals and individual follow up is ongoing by UNHCR's protection partners.
- In Hassakeh governorate protection partners continue identification and support to persons with specific needs such as women at risk, elderly in need of support, persons with disabilities, persons with serious medical conditions and children at risk continue to be identified.
- One of UNHCR's outreach volunteers reunified an unaccompanied child with his parents, after he was lost due to the ongoing hostilities and displacement in Hassakeh.
- Protection partners are planning assessments of protection needs in nine new collective shelters in Hassakeh.
- As of 16 October three of UNHCR supported community centres in Malikiyah, Tal Hamis and Qamishli resumed provision of protection services with full capacity to IDPs in host communities.

**NFI and shelter response**

*UNHCR partners are meeting with people on the ground in north-east Syria and providing core-relief items to the people in need to ease their suffering.*

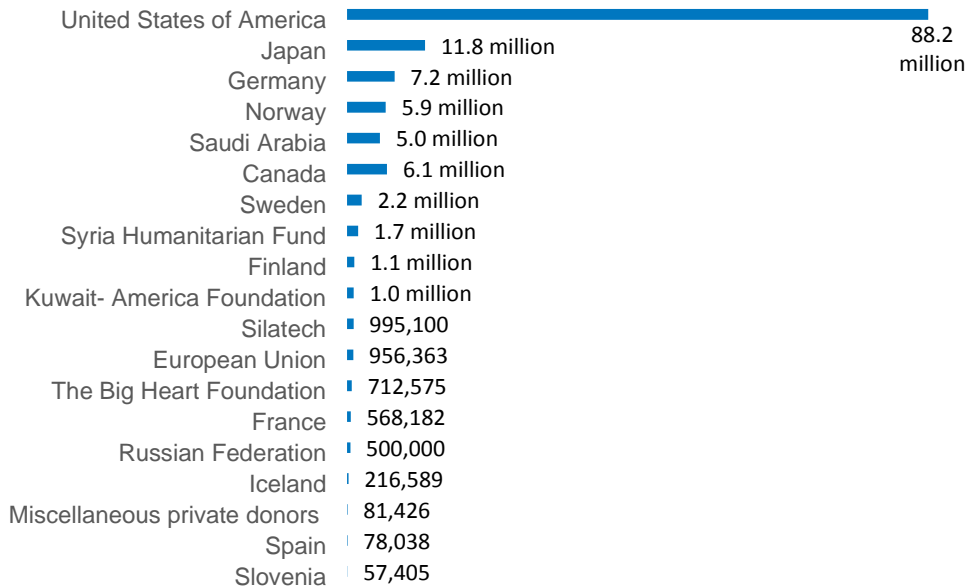
- As of 16 of October, 22,753 individuals have received core relief/winter items in the camps, 35,700 individuals have received core relief/winter items in collective shelters and host communities in total 58,453 individuals have been reached.
- Winterisation distribution started on the 16 of October in Al Hol camp, while it was completed in Roj camp on the same day.
- In Mahmoudli camp there is a lack of space and plots for new arrivals remains a concern, in addition to the urgent need for tents and NFIs for new arrivals.
- The UNHCR stocks of tents, shelter kits and core relief items in Qamishli, Al-Hasakeh are sufficient to immediately respond to the needs of the displaced persons and can be replenished from Damascus and Aleppo.
- UNHCR local partners EPDC and GOPA are conducting assessment in Al-Hasakeh collective shelters to determine further CRI needs.

# Financial Information\*

UNHCR is grateful for the critical support provided by donors that have contributed to this operation as well as those that have contributed to UNHCR programmes with broadly earmarked and unearmarked funds.

## EARMARKED CONTRIBUTIONS | USD

Earmarked contributions for the operation amount to some **US\$ 151,962,716**



## BROADLY EARMARKED CONTRIBUTIONS | USD

United States of America 27.4 million | Private donors Australia 9.2 million | Germany 5.4 million | Kuwait 5 million| Private donors Germany 4.5 million| Private donors Republic of Korea 3.5 million| Sweden 3.3 million.

## UNEARMARKED CONTRIBUTIONS | USD

Sweden 99.8 million | Private donors Spain 54.5 million | Norway 44.5 million | Netherlands 37.5 million | United Kingdom 31.7 million| Private donors Republic of Korea 27.6 million| Germany 26.7 million | Denmark 24.4 million | Private donors Japan 16.1 million | Switzerland 15.1 million | France 14 million| Private donors Italy 12.7 million | Private donors Sweden 10.4 million | Ireland 10.2 million.

\* Syrian Arab Republic Funding Update-as of 02 October 2019