

# DR Congo

31 October 2018

**531,819** refugees and asylum seekers in DRC, among them 52% are women.

**99.3%** of refugees in DRC live in rural areas, and 74% live outside refugee camps or settlements.

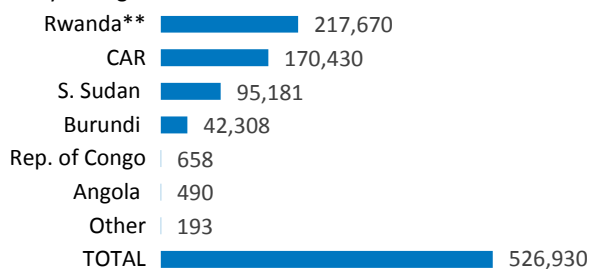
**27,177** refugees voluntary returned from DRC over the last three years. Most of them were Rwandans whose return was facilitated by UNHCR.

## POPULATION OF CONCERN

**526.930** refugees and **4,889** asylum-seekers in DRC,

**4.49M\*** Internally Displaced Persons

Country of origin



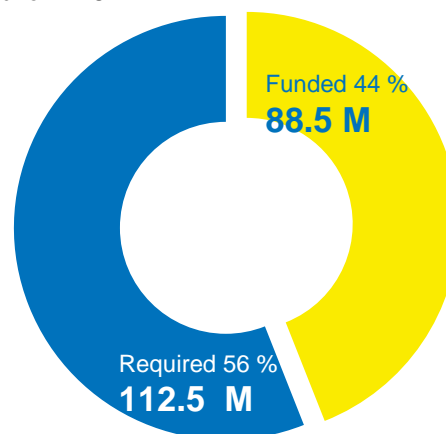
\* Source for IDP statistics: OCHA as of December 2017

\*\* The DRC Government presented the number of 245,052 Rwandan refugees as the outcome of a pre-registration exercise by the National Commission for Refugees from December 2014 to January 2015. Biometric registration of Rwandan refugees is ongoing.

## FUNDING AS OF 5 NOVEMBER

**USD 201.0 M**

requested for DRC



## UNHCR PRESENCE (OCTOBER 2018)

### Staff:

- 270 National staff
- 97 International staff
- 42 Affiliate workforce and deployees

### Offices:

- 1 Regional Representation in Kinshasa
- 5 Sub-Offices: Aru, Gbadolite, Goma, Kananga, Lubumbashi
- 4 Field Offices: Baraka, Kalemie, Libenge, Monga
- 9 Field Units: Bili, Zongo, Bukavu, Uvira, Bunia, Aba, Dungu, Tshikapa, Mbuji-Mayi

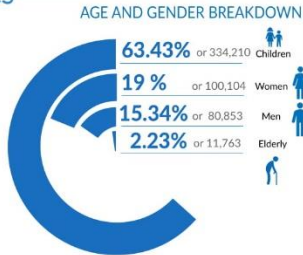
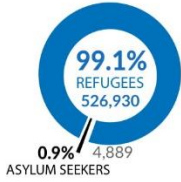


Boys in front of a school rehabilitated by UNHCR in Libenge, Sud-Ubangi Province, during its inauguration. © UNHCR/A. Stenbock-Fermor

# 531,819

REFUGEES AND ASYLUM SEEKERS

## KEY STATISTICS



## TYPES OF LOCATION



## REFUGEE POPULATION BY COUNTRY OF ORIGIN

Rwanda	217,670
CAR	170,430
S. Sudan	95,181
Burundi	42,308
Rep. Congo	658
Angola	490
Sudan	142
Others*	21
Uganda	16
Somalia	14

\* Others include Ivory Coast, Eritrea, Syria, Liberia, Chad, etc.

## REFUGEES FROM DRC IN AFRICA

# 781,917

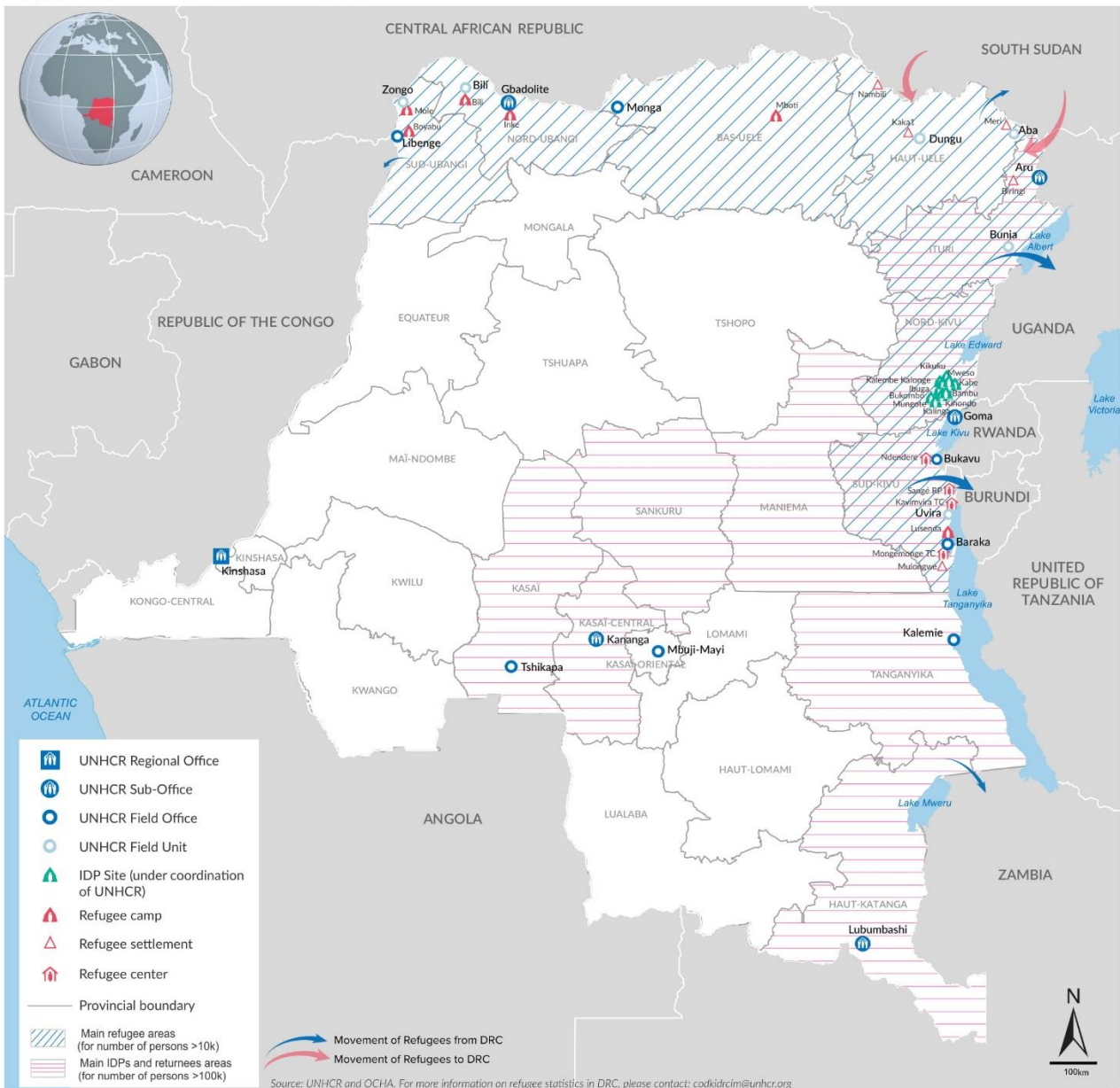
TOTAL DRC REFUGEE POPULATION

Uganda	284,265
Southern Africa*	106,561
Tanzania	84,170
Rwanda	80,796
Burundi	74,625
Other countries**	58,493
Zambia	40,918
Angola	36,374
Republic of Congo	15,715

Source: UNHCR

\* Southern Africa includes Namibia, Botswana, Lesotho, Malawi, Zimbabwe, Mozambique, Madagascar, RSA and the Kingdom of Eswatini.

\*\* Other countries include South Sudan, Kenya, Central African Republic and Chad



## Working with Partners

- Together with the DRC Government, working closely with the National Commission for Refugees (CNR), UNHCR ensures international protection and delivery of multi assistance to persons of concern.
- UNHCR works with 16 national and international implementing partners: ACTION AID, ACTED, ADES, ADSSE, AIDES, AIRD, ADRA, COOPI, CNR, DRC, INTERSOS, NRC, SAVE CONGO, TSF and WAR CHILD NL and WAR CHILD UK.
- Coordination mechanisms: Within the cluster system, UNHCR leads the Protection Cluster and co-leads the Protection and Prevention component of the National Strategy on SGBV. UNHCR also leads the Shelter Working Group within the Shelter/NFI Cluster, co-leads the Camp Coordination and Camp Management (CCCM) Working Group jointly with IOM, and co-leads the National Cash Working Group jointly with UNOCHA.

## External / Donors Relations

### Donors for UNHCR operations in DRC in 2018

United States of America (59.8M) | CERF (3.9M) | Sweden (2.5M) | European Union (2.4M) | Canada (1.2M) | France (1.2M) | Italy (0.9M) | Australia for UNHCR (0.64M) | UNIQLO (0,49M) | International Olympic Committee (0.33M) | UNAIDS (0.17M) | Spain (0.12M)

### Donors of regional or sub-regional funds 2018

United States of America (177.3M) | Private Donors Australia (9.7M) | Sweden (8.5M) | Private Donors Germany (6.3M) | Denmark (5.5M) | Germany (5.1M) | Australia (3.8M) | Canada (3.3M) | Norway (2.6M) | Private Donors Republic of Korea (2M)

### Major donors of unrestricted and regional funds in 2018

Sweden (98.2M) | Private Donors Spain (58.7M) | United Kingdom (45.3M) | Norway (42.5M) | Netherlands (39.1M) | Private Donors Republic of Korea (28.5M) | Denmark (25.5M) | Switzerland (15.8M) | Private Donors Italy (15.1M) | Private Donors Japan (14.6 M) | France (14M) | Germany (13.7M) | Private Donors Sweden (12.2M) | Italy (11.2M)

## CONTACTS

Andreas Kirchhof, Senior Regional External Relations Officer DRC, kirchhof@unhcr.org, Tel: +243 996 041 000, Cell +243 81 700 94 84

Simon Lubuku, Senior Public Information Associate DRC, lubuku@unhcr.org, Tel : +243 996 041 000, Cell +243 81 950 02 02

## LINKS

[DR Congo Emergency page](#) - [UNHCR DRC operation page](#) - [Facebook page](#) - [Twitter](#)