

North-west Syria

June 2019

21,740

Households assisted through UNHCR with core relief items and shelter material in 2019

108,940

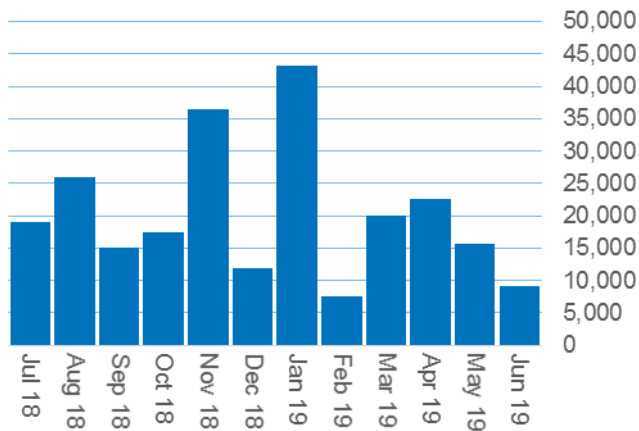
Individuals reached through UNHCR with core relief items and shelter material in 2019

119

Trucks with UNHCR humanitarian supplies sent across the border in 2019

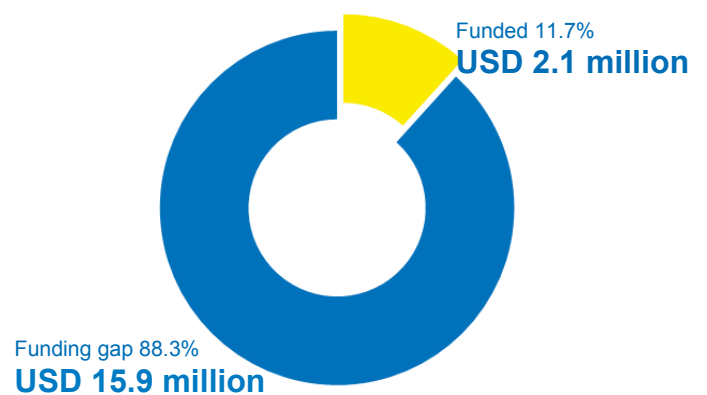
76,036

Individuals reached with protection services by UNHCR and partners in 2019



Number of **individuals reached** per month by UNHCR programme partners with core relief items and shelter material

FUNDING AS OF 30 JUNE 2019



Main objectives

1. Support the coordination of the cross-border humanitarian response through the Cluster system
2. Identify protection risks and assistance needs and inform the overall response
3. Provide protection services and emergency assistance with core relief items and shelter material.
4. Build capacity of (local) humanitarian organizations
5. Fill critical gaps in the basic needs of IDPs where required and feasible

Major developments

The year 2019 is seeing intense hostilities between the Government of Syria and non-state armed groups, and among the latter that have affected thousands of people in northern Hama and southern Idlib, displacing many. The situation was further aggravated by heavy rains and floods in northern Syria at the end of December and beginning of January. More floods affected the area at the end of March, causing more displacements. High levels of violence in May and June caused additional large numbers of people to be displaced.

Major developments had taken place in north-west Syria already in 2018. As a result, more than 688,000 people were newly displaced within non-state armed group controlled areas.

A Readiness and Response Plan for north-west Syria is still in play and outlines the planned response to the cross-border team in Turkey.

Background

Following the adoption of UN Security Council Resolution 2165, UNHCR established its cross-border activities from southern Turkey in July 2014. In 2019, through its own programme, UNHCR has partnerships with six organizations - IRC, ACTED-REACH, WATAN, Bir Dunya Cocuk Dernegi (Children of One World), SHAFAK and NRC - to assist displaced people by providing core relief items (CRIs), shelter support, and protection services. In addition, UNHCR is leading the Protection, Shelter/NFI (SNFI) and Camp Coordination and Camp Management (CCCM) Clusters. All Clusters closely follow the humanitarian developments in the conflict areas in north-west Syria and contribute to emergency preparedness plans accordingly.

UNHCR Programme

While the conflict between Government of Syria and non-state armed groups continued during the month of June, causing further displacements from northern Hama and southern Idlib, UNHCR and its partners kept providing basic assistance and protection services to IDPs and vulnerable host community members in north-west Syria under the cross-border operation from Gaziantep, Turkey. In Idlib and Aleppo Governorates, **16,365 displaced people** were assisted with **3,273 emergency non-food item (NFI) kits**.

In addition, UNHCR's partners conducted awareness raising and psychosocial support (PSS) sessions, identified cases and referred them to basic services in Idlib and Aleppo Governorates; such community-based protection interventions reached **5,865 people**. In addition, **3,317 displaced and vulnerable people** continued to receive protection services such as awareness raising on civil status documentation and housing, land and properties, legal counselling and assistance, case management and referrals. The displacement and protection monitoring initiatives continued and the latest reports are published on the websites of the CCCM and Protection Clusters.



CCCM Cluster

The CCCM Cluster coordinates the efforts of **35 active member organizations** providing cross-border assistance in north-west Syria. Activities focus on coordinating the joint efforts of the Cluster members to cover the multi-sectoral needs in **342 IDP sites** hosting around **558,138 IDPs / 106,884 families in north-west Syria** and, on behalf of the humanitarian community, track IDP movements and coordinating the provision of multi-sectoral assistance in IDP settlements.

In June, **67,537 individuals** were displaced from southern Idlib and northern Hama and moved to different communities in Aleppo and Idlib Governorates, mainly Maaret Tamsrin and Dana sub-districts. In response to the current displacement, 61,645 newly displaced people were assisted with **12,329 NFI kits** and **8,204 family size tents**.

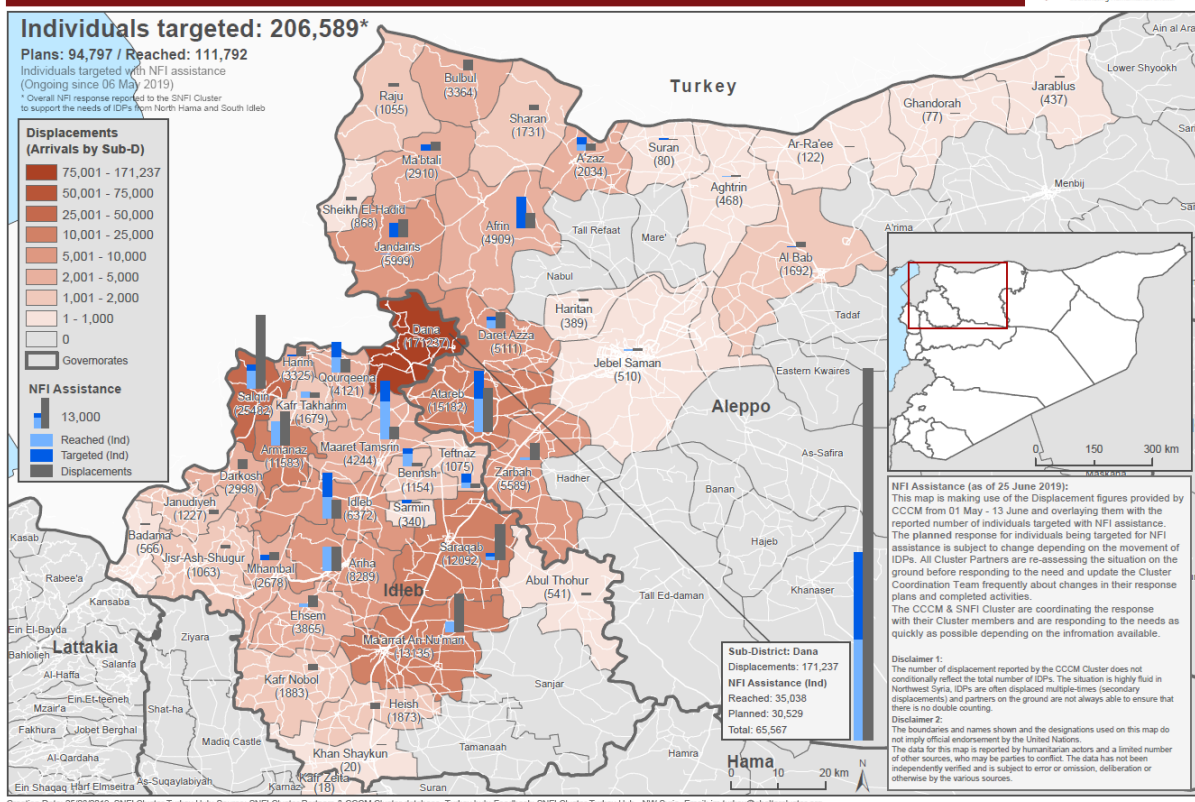


Shelter/NFI Cluster

The SNFI Cluster is led by UNHCR, coordinating the efforts of **47 active member organizations** in the cross-border operation. The Cluster addresses emergency shelter and NFI needs by providing in-kind assistance as well as cash or voucher assistance. It promotes household and community resilience. The Cluster also raises awareness and provides technical guidance on housing, land and property rights relevant for humanitarian shelter activities.

The Cluster, in collaboration with the CCCM Cluster and its active members, responded to the affected populations with distributions of tents and NFIs. Overall, as part of both regular and emergency response, SNFI Cluster members reached **91,821 individuals**, with 81 per cent being **NFI assistance** and 19 per cent **shelter assistance**, including tents, shelter kits and rehabilitation of housing units.

The Cluster also conducted a Winterization After Action Review in order to evaluate the impact and timeliness of the response. Lessons learned and recommendations have been shared with Cluster members and donors.



Protection Cluster

The Protection Cluster (co-led by UNHCR and IRC) brings together **59 active members**, which include actors of the three Sub-Clusters: Child Protection (co-led by UNICEF and World Vision), Gender Based Violence (co-led by UNFPA and Global Communities) and Humanitarian Mine Action (led by UNMAS). The Cluster also convenes the Protection Monitoring Task Force (co-led by UNHCR and IRC) and a Housing, Land and Property Technical Working Group (HLP TWG) (co-led by UNHCR and NRC) on a regular basis. The Cluster continues to prioritize the provision of lifesaving emergency response services to newly displaced populations and to expand specialized protection services through a wider geographic coverage and outreach capacity, including through mobile teams. In addition, the Cluster seeks to inform the overall response through protection monitoring, while also supporting capacity building with humanitarian actors to strengthen information and advocacy on protection concerns, and Do No Harm (DNH) efforts.

In June, Cluster and Sub-Cluster members provided **159,713 interventions** to IDPs and affected host community members in 285 communities in **five governorates** (Idleb, Aleppo, Ar-Raqqa, Deir Ez-Zor and Al-Hasakeh). The main services were: psychological first aid (PFA) for 656 girls, 414 boys, 868 women and 258 men; legal awareness raising sessions focusing on housing, land and properties and/or civil status documentation for 578 649 girls, 390 boys, 2,317 women and 1,612 men; integrated/comprehensive case management services for 3 girls, 2 boys and 13 women; and referrals to other services for 153 girls, 119 boys, 213 women and 76 men. Sub-Cluster members also provided a range of specialized child protection and GBV services, as well as risk education to communities in northern Syria.

The **Protection Monitoring Task Force** members conducted 889 interviews with key informants (423 558 male and 331 female) in 131 communities, 23 Sub-districts in Idleb and Aleppo Governorates.

External and Donor Relations

Thanks to UNHCR's donors for supporting the humanitarian response in north-west Syria:

Turkey Humanitarian Fund | United States of America