

# North-west Syria

July 2019

**22,740**

Households assisted through UNHCR with core relief items and shelter material in 2019

**113,940**

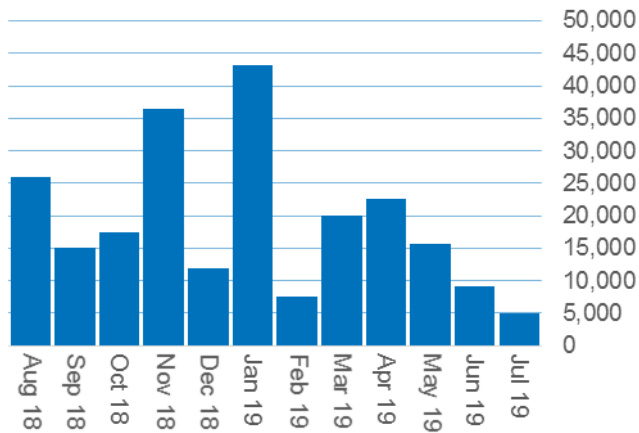
Individuals reached through UNHCR with core relief items and shelter material in 2019

**124**

Trucks with UNHCR humanitarian supplies sent across the border in 2019

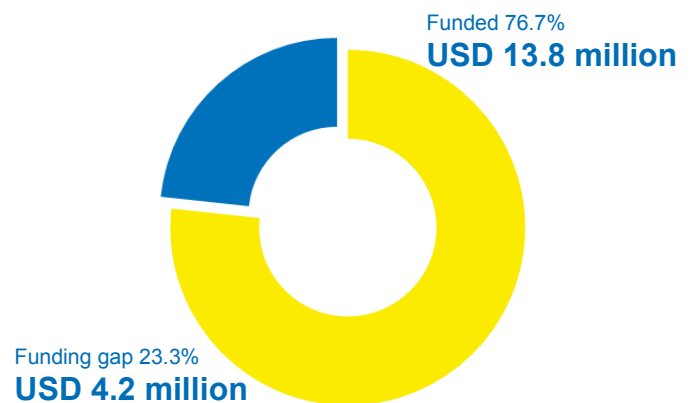
**95,080**

Individuals reached with protection services by UNHCR and partners in 2019



Number of **individuals reached** per month by UNHCR programme partners with core relief items and shelter material

## FUNDING AS OF AUGUST 2019



## Main objectives

1. Support the coordination of the cross-border humanitarian response through the Cluster system
2. Identify protection risks and assistance needs and inform the overall response
3. Provide protection services and emergency assistance with core relief items and shelter material.
4. Build capacity of (local) humanitarian organizations
5. Fill critical gaps in the basic needs of IDPs where required and feasible

## Major developments

The year 2019 is seeing intense hostilities between the Government of Syria and non-state armed groups, and among the latter that have affected thousands of people in north-west Syria. The situation was aggravated by heavy rains and floods in northern Syria at the end of December and beginning of January, and again in March.

High levels of violence that started in late April and are continuing unabated have caused high numbers of injuries and deaths, destruction of civilian infrastructure and disruption in the provision of basic services. As a result, more than half a million people have been displaced from southern Idlib and northern Hama.

Major developments had taken place in north-west Syria already in 2018 and more than 688,000 people were newly displaced within non-state armed group controlled areas.

A Readiness and Response Plan for north-west Syria is still in play and outlines the planned response to the cross-border team in Turkey.

## Background

Following the adoption of UN Security Council Resolution 2165, UNHCR established its cross-border activities from southern Turkey in July 2014. In 2019, through its own programme, UNHCR has partnerships with six organizations - IRC, ACTED-REACH, WATAN, Bir Dunya Cocuk Dernegi (Children of One World), SHAFAK and NRC - to assist displaced people by providing core relief items (CRIs), shelter support, and protection services. In addition, UNHCR is leading the Protection, Shelter/NFI (SNFI) and Camp Coordination and Camp Management (CCCM) Clusters. All Clusters closely follow the humanitarian developments in the conflict areas in north-west Syria and contribute to emergency preparedness plans accordingly.

## UNHCR Programme

Displaced people remain in need of assistance in north-west Syria. UNHCR and its partners continued to monitor the situation and provide basic assistance and protection services to IDPs and conflict-affected vulnerable host community members in north-west Syria under the cross-border operation from Gaziantep, Turkey. In July, **9,210 displaced people** were assisted with **1,842 emergency NFI kits** in Idleb and Aleppo Governorates. This brings the total number of people assisted with NFIs since the start of the latest offensive in Idleb Governorate to **41,840 people** (1 May to 31 July).

UNHCR's partners conducted awareness raising and psychosocial support (PSS) sessions, identified cases and referred them to basic services in Idleb and Aleppo Governorates; such community-based protection interventions reached **7,692 people**. In addition, **11,352 people** received protection services such as awareness raising on civil status documentation and housing, land and properties, legal counselling and assistance, case management and referrals. The displacement and protection monitoring initiatives continued and the latest reports are published on the websites of the CCCM and Protection Clusters.

On 10 July, the delivery of the 165th cross-border trans-shipment to UNHCR's implementing partner WATAN took place through the Bab Al Hawa border gate to Syria, carrying 1,000 emergency NFI kits to assist 5,000 newly displaced people. In total, five trucks were used to carry out the trans-shipment.



### CCCM Cluster

The CCCM Cluster coordinates the efforts of **35 active member organizations** providing cross-border assistance in north-west Syria. Activities focus on coordinating the joint efforts of the Cluster members to cover the multi-sectoral needs in **358 IDP sites** hosting **600,225 IDPs / 113,852 families in north-west Syria** and, on behalf of the humanitarian community, track IDP movements and coordinating the provision of multi-sectoral assistance in IDP settlements.

In July, **126,226 individuals** were displaced from southern Idleb and northern Hama and moved to different communities in Aleppo and Idleb Governorates, mainly Dana and Salqin sub-districts. In response to the current displacement, the Cluster coordinated the distribution of **10,500 family tents** in more than **150 locations** between May and July 2019.

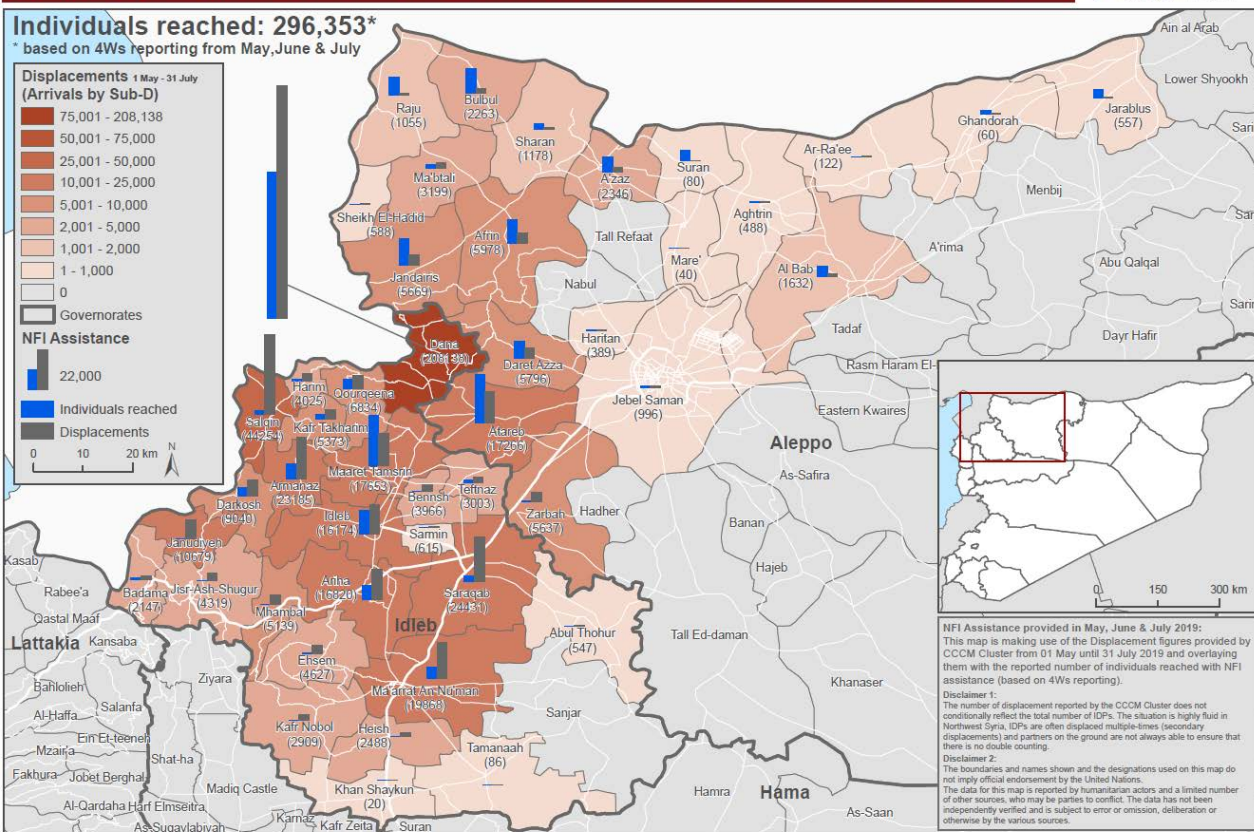


### Shelter/NFI Cluster

The SNFI Cluster is led by UNHCR, coordinating the efforts of **44 active member organizations** in the cross-border operation. The Cluster addresses emergency shelter and NFI needs by providing in-kind assistance as well as cash or voucher assistance. It promotes household and community resilience. The Cluster also raises awareness and provides technical guidance on housing, land and property rights relevant for humanitarian shelter activities.

The Cluster, in collaboration with the CCCM Cluster and its active members, responded to the affected populations with distributions of tents and NFIs. Overall, as part of both regular and emergency response, SNFI Cluster members reached **95,657 individuals**, with 68 per cent being **NFI assistance** and 32 per cent **shelter assistance**, including tents, shelter kits and rehabilitation of housing units.

The Cluster is preparing for the winterization 2019/2020 response. It has launched the first of two rounds of the **Winterization Planning**, which will give an overview of the Cluster members' capacity to respond to winter needs, their secured funding and remaining gaps based on the planned activities. This information will be used for advocacy purposes and will also be shared and analysed with the other hubs at Whole-of-Syria level.



## Protection Cluster

The Protection Cluster (co-led by UNHCR and IRC) brings together **65 active members**, which include actors of the three Sub-Clusters: Child Protection (co-led by UNICEF and World Vision), Gender Based Violence (co-led by UNFPA and Global Communities) and Humanitarian Mine Action (led by UNMAS). The Cluster also convenes the Protection Monitoring Task Force (co-led by UNHCR and IRC) and a Housing, Land and Property Technical Working Group (co-led by UNHCR and NRC) on a regular basis. The Cluster continues to prioritize the provision of lifesaving emergency response services to newly displaced populations and to expand specialized protection services through a wider geographic coverage and outreach capacity, including through mobile teams. In addition, the Cluster seeks to inform the overall response through protection monitoring, while also supporting capacity building with humanitarian actors to strengthen information and advocacy on protection concerns, and Do No Harm (DNH) efforts.

In July, Cluster and Sub-Cluster members provided **219,199 interventions** to IDPs and affected host community members in 282 communities in **three governorates** (Idlib, Aleppo and Ar-Raqqa). The main services were: psychological first aid for 1,811 girls, 1,612 boys, 1,492 women and 1,012 men; legal awareness raising sessions focusing on housing, land and properties and/or civil status documentation for 21 girls, 4 boys, 230 women and 224 men; integrated/comprehensive case management services for 44 girls, 34 boys, 109 women and 39 men; and referrals to other services for 225 girls, 526 boys, 479 women and 206 men. Sub-Cluster members also provided a range of specialized child protection and GBV services, as well as risk education to communities in northern Syria.

The **Protection Monitoring Task Force** members conducted 982 interviews with key informants (595 male and 387 female) in 138 communities, 23 Sub-districts in Idlib and Aleppo Governorates.

The Protection Cluster also finalized and published a Rapid Protection Assessment.

## External and Donor Relations

**Thanks to UNHCR's donors for supporting the humanitarian response in north-west Syria:**

United States of America | Turkey Humanitarian Fund